

TITAN S8

Portable Data Acquisition Logger

sku MATREC155



PRODUCT USER GUIDE

To buy online, visit our website at
www.tiptemp.com.

TABLE OF CONTENTS

2 Product Overview

5 User Interface

14 Logging Data

17 Viewing Data

19 Managing Data

24 Device Settings

26 Specifications

28 Index

29 Need Help?



PRODUCT OVERVIEW



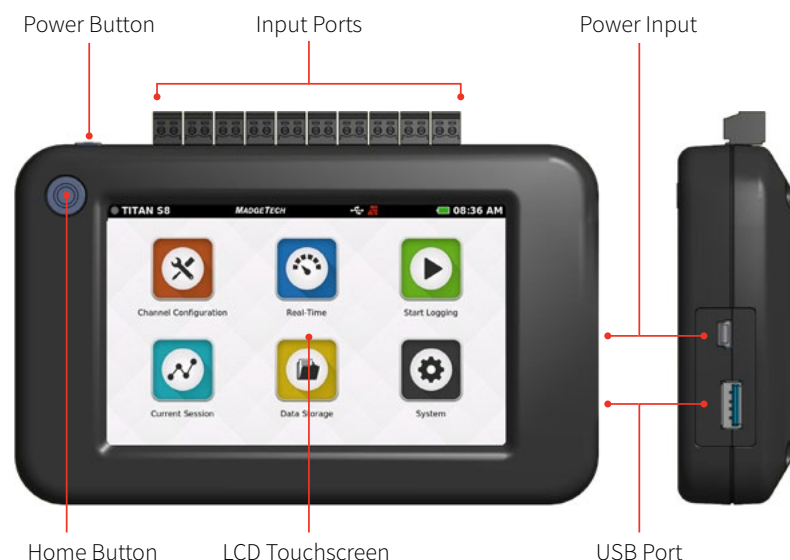
Device Overview

The MadgeTech Titan S8 is a portable, multi-use industrial data logger with eight channels and a user-friendly touchscreen interface. This versatile logger measures and records temperature, current, voltage and pulse simultaneously and displays data in real-time. The Titan S8 is compatible for use with many thermocouple, RTD or thermistor probes as well as a number of voltage output sensors, current switches, transmitters and transducers.

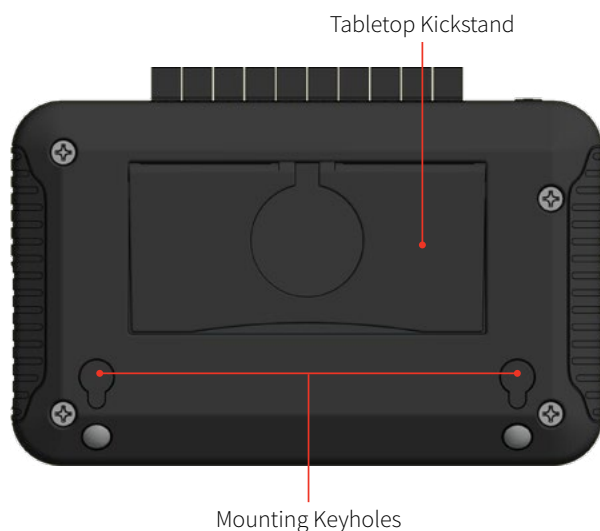
Versatility makes the Titan S8 a perfect companion for industrial engineers, quality assurance professionals, compliance officers or automotive technicians. The Titan S8's touchscreen user interface allows for easy set up and configuration.

The Titan S8 is a powerful, independent tool. Unlike other data loggers, the Titan S8 delivers an all-in-one data collection and monitoring solution that does not require a PC or any downloaded software for operation.

External Features



- **Power Button:** To power on and power off the device, hold down the Power button for 3 seconds.
- **Home Button:** The Home button will return the user to the home screen (details on [page 6](#)).
- **Input Ports:** The Titan S8 features 8 sensor channel inputs plus one alarm port and a ground (details on [pages 3-4](#)).
- **LCD Touchscreen:** 5 inch LCD capacitive touchscreen.
- **USB Port:** The Titan S8 has a built-in USB port for downloading data to a flash drive.
- **Power Input:** Charging port.



PRODUCT OVERVIEW



Device Orientation

The Titan S8 display can rotate 180 degrees depending on the desired orientation of the device. This option is available from the Settings menu under the Display section. **Please note:** Power restart required in order to apply screen rotation.

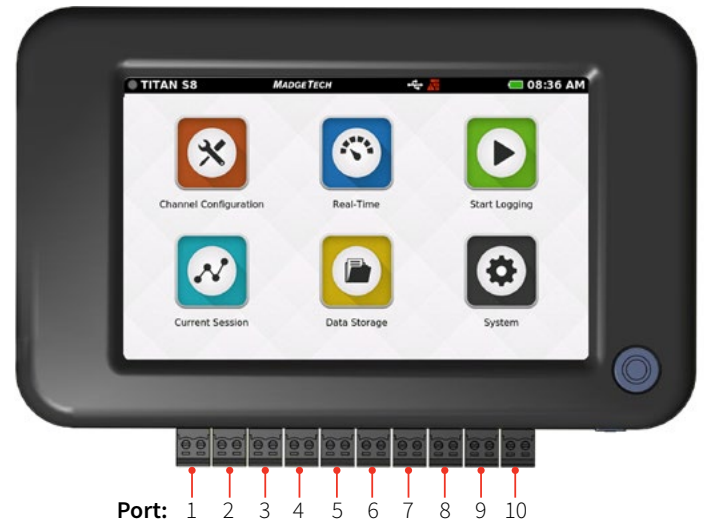
Desktop Orientation

For handheld and tabletop use, the inputs will be on the top. Note port number as it relates to device orientation.



Wall Mount Orientation

For wall mount use the unit will be rotated so that the inputs will be on the bottom.



Tabletop Orientation

The Titan S8 features a built in kickstand on the back of the device for use on flat surfaces.



Device Ports

The Titan S8 features 10 ports. Please refer to the images above for the port number as it relates to device orientation.

Channels and Functions

- Ports 1 thru 8 are sensor input channels (Temperature, Current or Voltage)
- Port 9 serves as an alarm output
- Port 10 serves as a ground for the device

Frequency or Pulse Counter

Can only be used on port 1

3-Wire and 4-Wire PT100 RTD Sensors

Use ports 1-2, 3-4, 5-6, or 7-8

2-Wire PT100 RTD Sensors

Can be used on ports 1-8

PRODUCT OVERVIEW



Sensor Types & Measurement Ranges

Each of the 8 input channels can be individually configured for the following types and sensor ranges.

PARAMETER	INPUT TYPE	RANGE
Current	Current input	-5 mA to 50 mA
Frequency (port 1 only)	Frequency input	0 to 25,000 Hz
Pulse / Counter (port 1 only)	Pulse input	0 to 4,000,000,000 Pulses
Voltage	Volt input	-0.5 V to 12.0 V
Voltage	Millivolt input	-100 mV to 2450 mV
Temperature	Thermistor NTC-1 (2252)	-25 °C to +150 °C
Temperature	Thermistor NTC-2 (10K)	-25 °C to +150 °C
Temperature	PT100 RTD 2-Wire	-200 °C to +850 °C
Temperature	PT100 RTD 3-Wire	-200 °C to +850 °C
Temperature	PT100 RTD 4-Wire	-200 °C to +850 °C
Temperature	Thermocouple J	-210 °C to +760 °C
Temperature	Thermocouple K	-270 °C to +1370 °C
Temperature	Thermocouple T	-270 °C to +400 °C
Temperature	Thermocouple E	-270 °C to +980 °C
Temperature	Thermocouple R	-50 °C to +1760 °C
Temperature	Thermocouple S	-50 °C to +1760 °C
Temperature	Thermocouple N	-270 °C to +1300 °C
Temperature	Thermocouple B	+50 °C to +1820 °C

Powering, Charging and Downloading Data



Power Button
(On/Off)



USB-C Charging Port
(Cable Included)



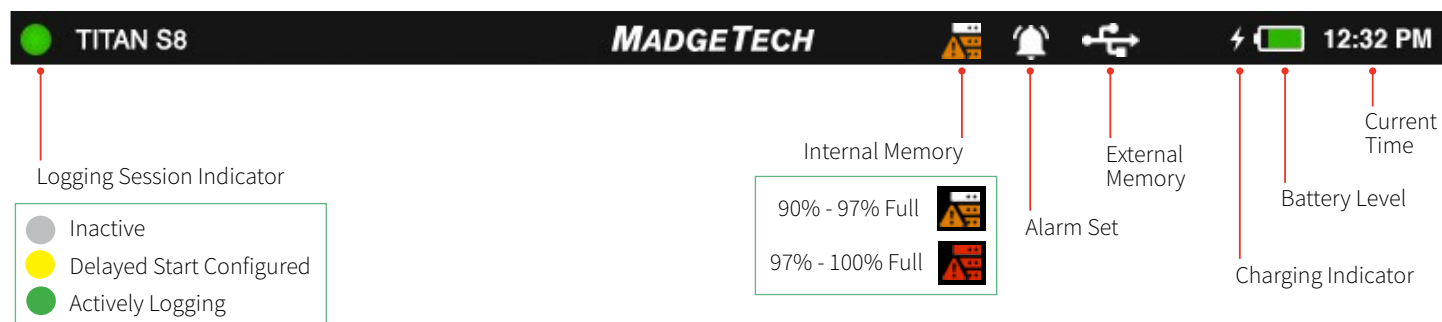
USB Port
(For offloading data files and
updating device software)

USER INTERFACE



Top Menu Bar

The top bar of the Titan S8 Interface features status icons and useful information to refer to while using the device.



Home Screen

The Home screen will display the following options when the Home button is selected.

- **Channel Configuration:** Configure parameters and options for each channel.
- **Real-Time:** Quickly view Real-Time data for all active channels.
- **Start Logging:** Start logging using current settings. (Stop logging if device is actively logging.)
- **Current Session:** View data from the current logging session as graph, tabular or real-time.
- **Data Storage:** View, Copy, Delete and Add notes to logged sessions.
- **System:** Access device preferences and options.



USER INTERFACE



First Time Use

Follow these steps when the device is powered on for the first time or if the battery has been removed or replaced.

1

POWER BUTTON

Press and hold the Power Button for 3 seconds to power up the device.



2

SCREEN READY

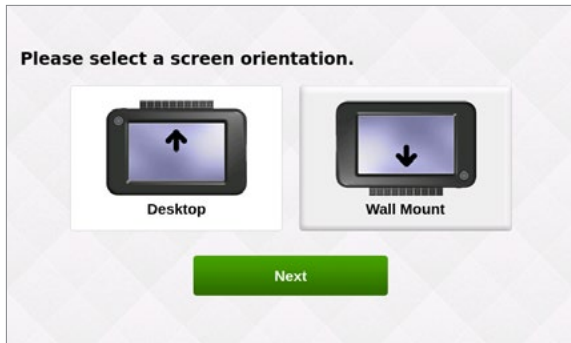
Wait for the device to initiate, you will see the MadgeTech logo when complete.



3

SELECT SCREEN ORIENTATION

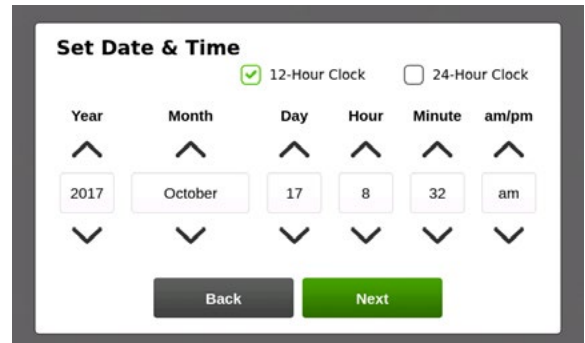
For desktop use, inputs are facing upward.
For wall mounted use, inputs are facing downward.



4

SET UP INITIAL DATE AND TIME

Enter the local date and time to be used by the device and click **Next** to continue to Home screen.



5

When the device presents the Home screen it is ready to use.

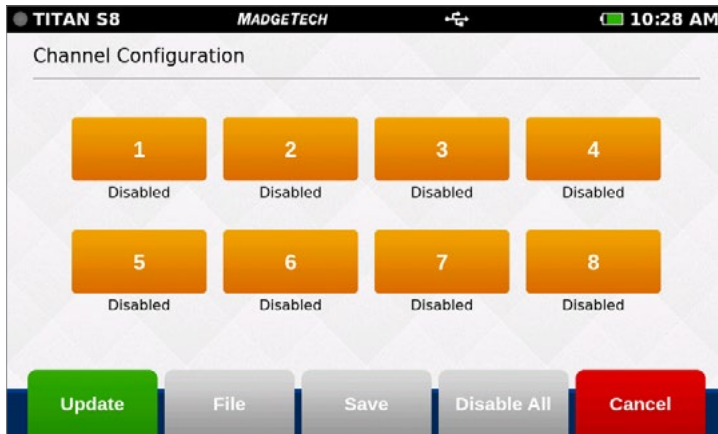


USER INTERFACE

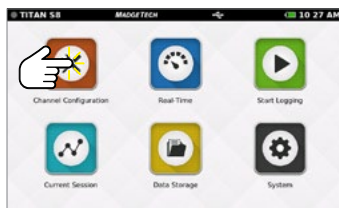


Channel Configuration

When the Channel Configuration icon is selected, the device will display the screen shown below:



- **Channel 1-8:** Configures the type of channel input, units, engineering units (if applicable), alarms and user calibration adjustments.
- **Update:** Applies the current channel configuration to make the device ready to start logging or display real-time data.
- **File:** Loads previously saved channel configurations.
- **Save:** Saves the current channel configuration so it may be loaded and used later.
- **Disable All:** Clears the configuration of all channels, returning them to the default disabled status.
- **Cancel:** Cancels changes and then goes back to the Home screen.



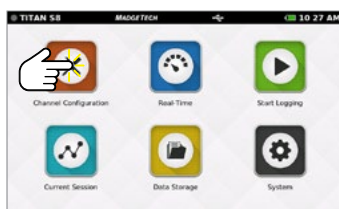
Select Channel Configuration

Channel Setup

When the user selects a Channel, the device will display the Channel Setup screen with several options:



- **Disable** (Channel is not being used)
- **RTD** (RTD probe)
- **TC** (Thermocouple probe)
- **Voltage**
- **Current**
- **Thermistor** (Thermistor probe)
- **Pulse** (Only available on channel 1)



Select Channel Configuration



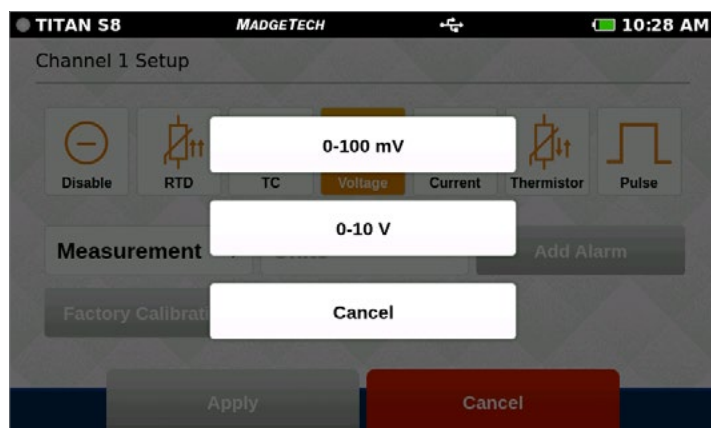
Select Channel

USER INTERFACE



Measurement Setup

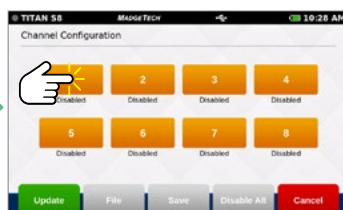
When the user selects a Measurement Parameter, the device will display the relevant options for that selection. The example below shows the Voltage options:



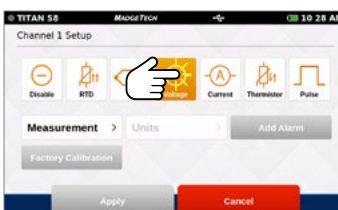
Select the **Measurement** button to display a pop-up screen of relevant measurement types to choose from.



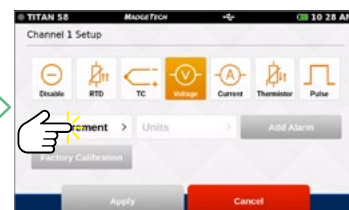
Select Channel Configuration



Select Channel



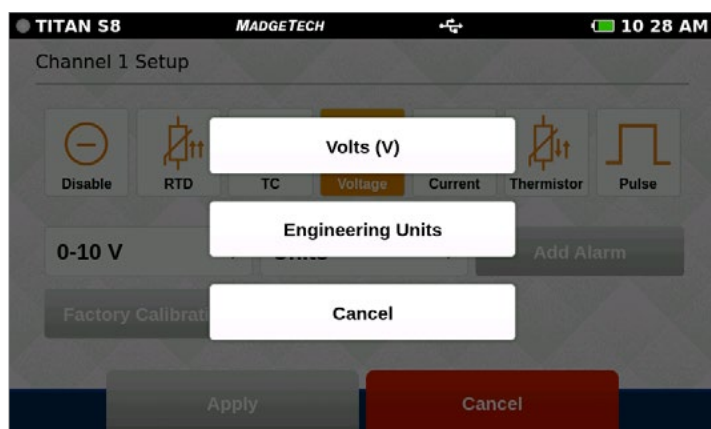
Select Measurement Parameter



Select Measurement Type

Measurement Units

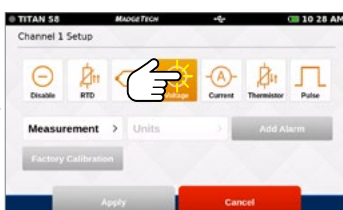
When the user selects the Units button, the device will display a pop-up menu of the corresponding options for that selection. The example below shows the Voltage options:



Engineering Units: This will be an option to set up if the user selects the Voltage, Current or Pulse sensor (see details below and on [page 9-10](#)).



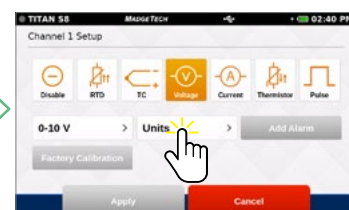
Select Channel



Select Measurement Parameter



Select Measurement Type



Select Measurement Units

USER INTERFACE



Engineering Units

Engineering Units can be applied to any channel measuring Voltage, Frequency or Pulse to display readings in a user selected custom unit of measure.

TITAN S8 **MADGETECH** 10 28 AM

Channel 1 Engineering Unit (V)

Gain
Value

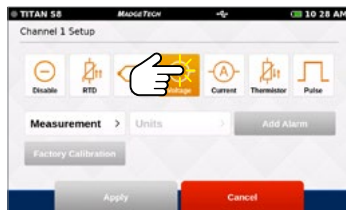
Offset
Value

Unit of Measurement
Descriptive

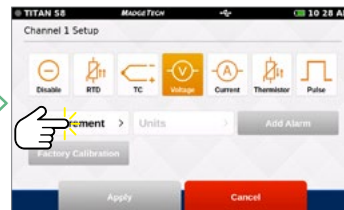
Abbreviation
Symbolic

Apply File Save Wizard Cancel

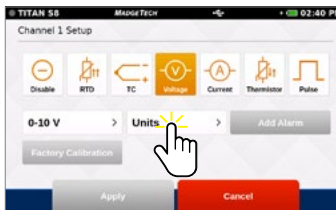
- **Gain:** User selected gain value.
- **Offset:** User selected offset value.
- **Units Label:** User selected label to display.
- **Apply:** Saves the settings.
- **File:** Retrieves a previously saved Engineering Unit setting.
- **Save:** Saves the Engineering Unit setting for future use.
- **Wizard:** Allows the user to set up units by entering the input and output values for low and high scale points. The unit will automatically calculate the gain and offset the from these values.
- **Cancel:** Returns the user to the Channel Configuration screen.



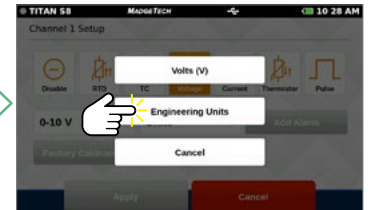
Select Measurement Parameter



Select Measurement Type



Select Measurement Units



Select Engineering Units

USER INTERFACE



Setting Up Engineering Units

TITAN S8 MADGETECH 10 28 AM

Channel 1 Engineering Unit (V)

Gain	Offset
Value	Value
Unit of Measurement	Abbreviation
Descriptive	Symbolic

Apply File Save Wizard Cancel

Enter the unit of measurement and abbreviation.

TITAN S8 MADGETECH 10 29 AM

Channel 1 Engineering Unit (V)

Gain	Offset
Value	Value
Unit of Measurement	Abbreviation
ppm	ppm

Apply File Save Wizard Cancel

Click the **Wizard** button to launch the Engineering Unit Wizard.

TITAN S8 MADGETECH 16 47

Channel 1 Engineering Unit Wizard

	Input (mA)	Output (mgl)
Low Scale Point:	Value	Value
High Scale Point:	Value	Value

Apply Cancel

Enter the low and high scale point inputs and outputs and click **Apply**.

TITAN S8 MADGETECH 10 29 AM

Channel 1 Engineering Unit (V)

Gain	Offset
62.5	-250
Unit of Measurement	Abbreviation
ppm	ppm

Apply File Save Wizard Cancel

The gain and offset are automatically set. Click **Save** to save the engineering units to the channel and click **Apply** to apply the changes to current logging session.

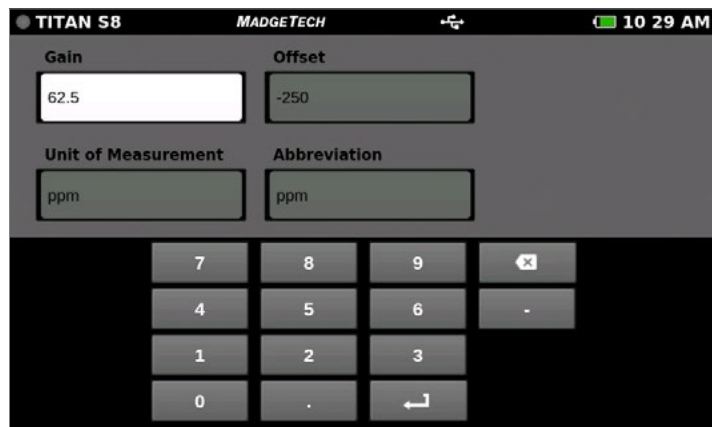
USER INTERFACE



Keyboard Function

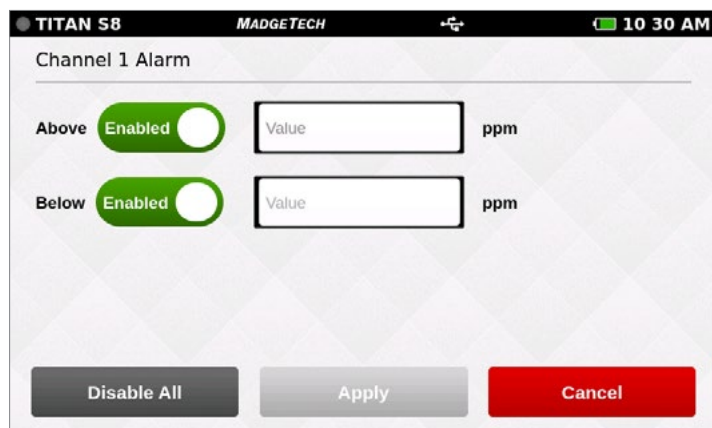
When the user taps in any text field within the interface, the keyboard will appear. The numeric keypad appears when the **Gain** and **Offset** fields are selected. The keyboard appears when **Unit of Measurement** and **Abbreviation** fields are selected.

To prevent the keyboard from obscuring content, the screen will always focus on the selected field and bring it into view. Once the text field is complete, the user can tap anywhere on the screen and the keyboard will disappear from view.

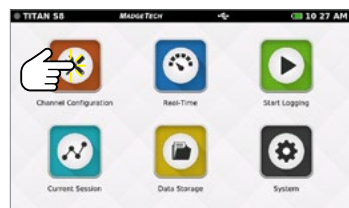


Alarms

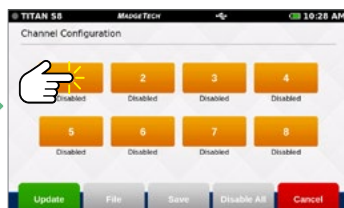
Users can create one alarm configuration per channel with up to two alarm values per channel (above and below threshold):



- **Above:** Indicates the high reading threshold at which the alarm becomes active.
- **Below:** Indicates the low reading threshold at which the alarm becomes active.
- **Enabled/Disabled:** Tap the button to either enable or disable the text field to enter desired alarm value.
- **Disable All:** Clears the alarm settings.
- **Apply:** Applies the setting to the current channel.
- **Cancel:** Cancels changes and then returns the user to the Channel Configuration screen.



Select Channel Configuration



Select Channel



Select Add Alarm

USER INTERFACE

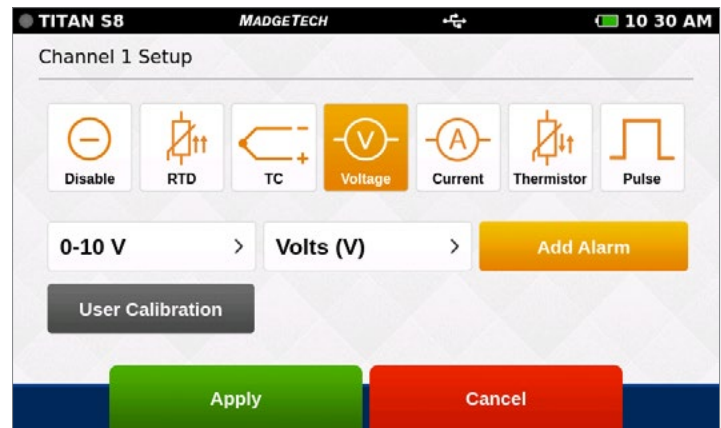


Factory Calibration

The Titan S8 includes a complete Factory Calibration feature that provides users with the ability to adjust the calibration settings per channel and revert back to the factory settings at any time. **Note:** For best performance and accuracy, Factory Calibration should be performed at least once every 12 months.



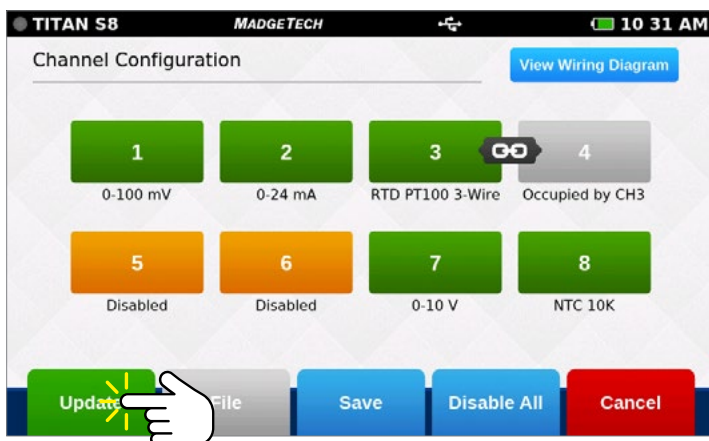
Factory Calibration: Indicates the device is currently in the factory calibrated state.



User Calibration: Indicates the calibration settings have been modified by the user.

Channel Configuration Overview

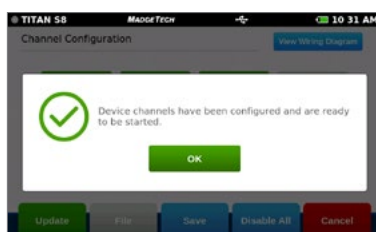
An example of a completed channel configuration screen is shown below.:



Apply Channel Configuration

Once channels are configured as desired, the user must then select **Update** to use those settings.

A pop-up as shown to the right will confirm that settings have been applied.



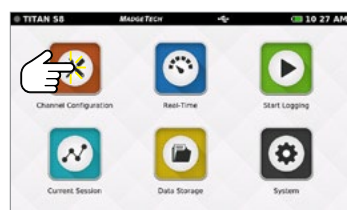
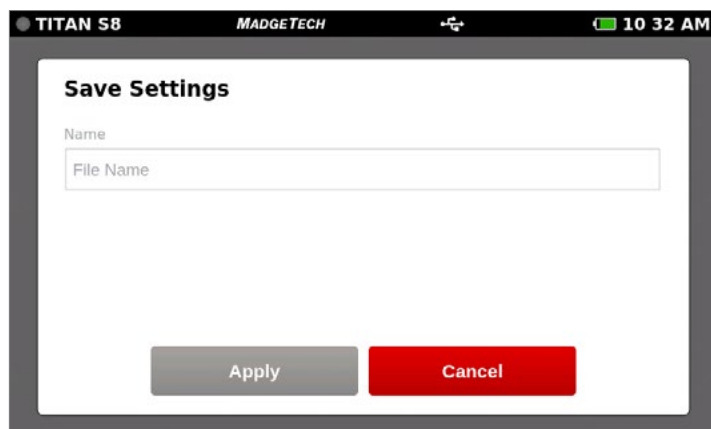
- **View Wiring Diagram:** Shows how to properly wire the device.
- **Green Channel:** Enabled channel.
- **Orange Channel:** Disabled channel.
- **Linked Channels / Gray Channels:** 3 or 4 wire RTD sensor types can be selected for Channels 1, 3, 5 and 7. This sensor type will also occupy the next sequential channel and will be visually represented with a Link icon as seen between Channels 3 and 4 on the screen to the left.
- **Update:** Once the user has configured the channel settings, this button will apply the current settings to all channels.
- **File:** Loads previously saved configurations.
- **Save:** Saves the current Channel Configuration so it may be loaded and used in the future.
- **Disable All:** Clears the programmed channels to disable all.
- **Cancel:** Cancels user changes and then goes back to the Home screen.

USER INTERFACE

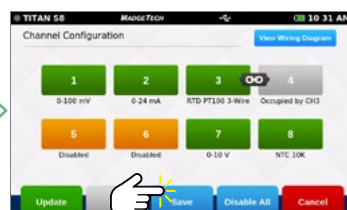


Save Configuration Settings

Completed channel configurations can be saved for repeated use. The user can select **Save** from the channel configuration screen to select a name for the saved settings file and apply them.



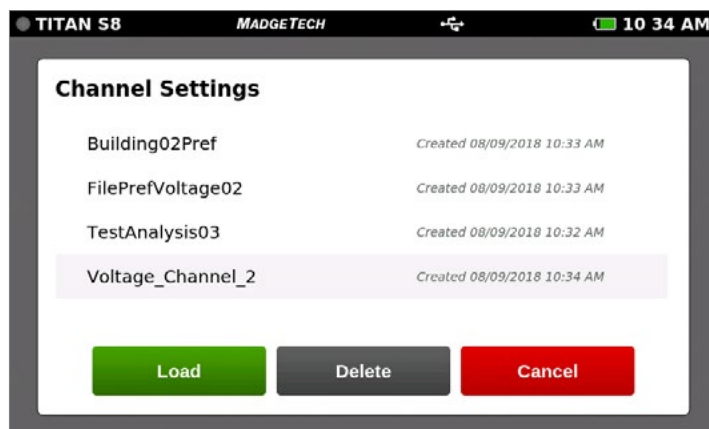
Select Channel Configuration



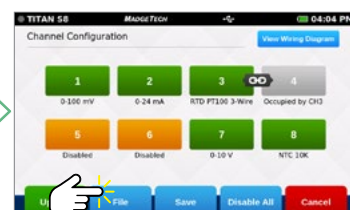
Select Save

Load Configuration Settings

Saved channel configurations can be easily loaded for repeated use. The user can select File from the channel configuration screen to choose from the list of previously saved settings files. **Note:** Loading a saved settings file will replace the existing configuration.



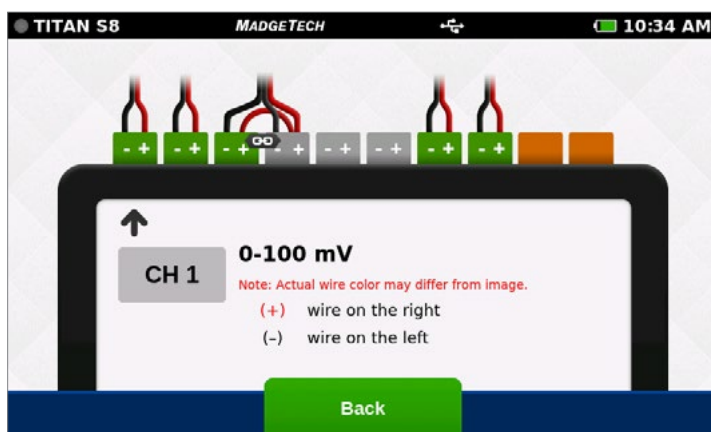
Select Channel Configuration



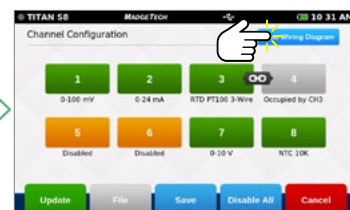
Select File

Wiring Diagram

From the channel configuration screen, the user can select the Wiring Diagram button to display the proper wiring of the unit based on the currently applied configuration. *Please note the position of channel 1 in regards to screen orientation.*



Select Channel Configuration



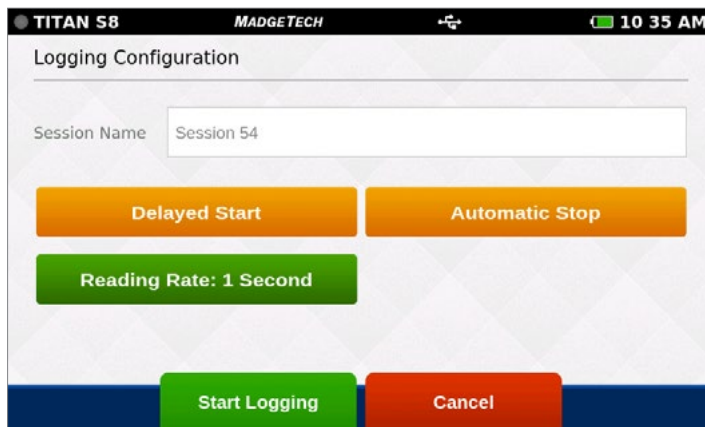
Select View Wiring Diagram

LOGGING DATA



Start Logging

When **Start Logging** is selected from the **Home** screen, the **Logging Configuration** screen will appear and the user will be prompted to name the data logging session. If the user has not already configured the channels, they will be prompted to configure prior to starting a logging session. The user will be able to configure start time, stop time, and reading rate in addition to naming the logging session.



- **Session Name:** Enter the desired name for the logging session. If no name is given, a unique default name will be assigned (i.e. Session 1).
- **Delayed Start:** Select a Delayed Start time or tap the Start Logging Data button to start immediately.
- **Automatic Stop:** The user has the option of selecting an Automatic Stop time. If no time is selected, the user will use the Stop Logging button on the Home screen to manually stop the device.
- **Reading Rate:** The reading rate will default to 1 minute or use the setting of the last session configuration. Maximum number of readings per session is 1,000,000 or 5,000,000 (user selectable in System/File Format).
- **Start Logging Data:** Begins logging data immediately.
- **Cancel:** Cancels user changes and returns back to the Home screen.



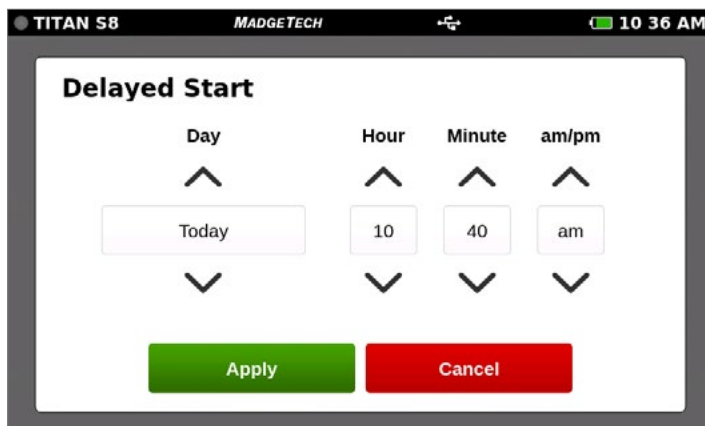
Select Start Logging



Keyboard will appear when user taps in the session text field.

Delayed Start

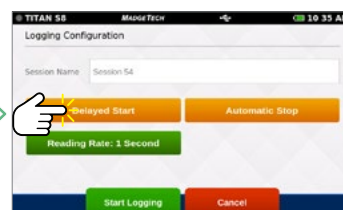
Selecting **Delayed Start** will bring up the following configuration screen:



- **Day:** Using the up and down arrows, the user is able to adjust the day.
- **Hour:** Using the up and down arrows, the user is able to adjust the hour.
- **Minute:** Using the up and down arrows, the user is able to adjust the minute.
- **am/pm:** Using the up and down arrows, the user is able to select am or pm (12-hour clock only).
- **Apply:** Applies the start or stop time settings and returns the user back to the Logging Configuration screen.
- **Cancel:** Returns the user to the Logging Configuration screen.



Select Start Logging



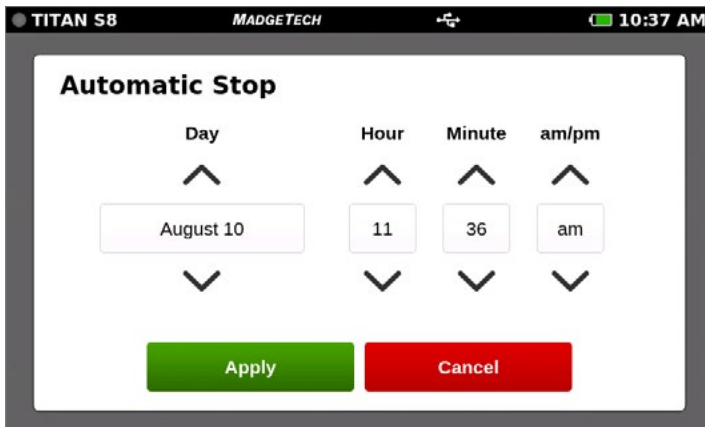
Select Delayed Start

LOGGING DATA

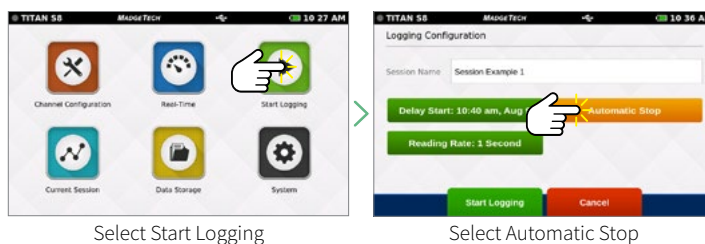


Automatic Stop

Selecting **Automatic Stop** will bring up the following configuration screen:

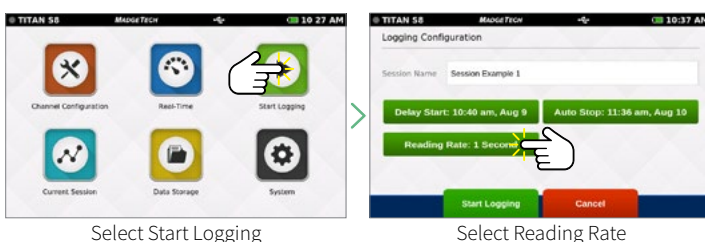
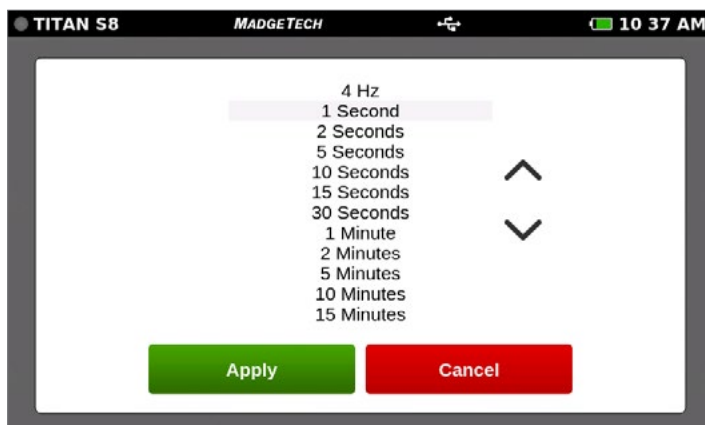


- **Day:** Use the up and down arrows to adjust the day.
- **Hour:** Use the up and down arrows to adjust the hour.
- **Minute:** Use the up and down arrows to adjust the minute.
- **am/pm:** Use the up and down arrows to select am or pm (12-hour clock only).
- **Apply:** Applies the start or stop time settings and returns the user back to the Logging Configuration screen.
- **Cancel:** Cancels the start or stop time settings and returns the user to the Logging Configuration screen.



Reading Rate

When the user selects **Reading Rate**, the following configuration screen will appear. Once the desired reading rate is selected, the user must select **Apply** to use that option, or **Cancel** to return to the previous screen. See [page 27](#) for available reading rates.

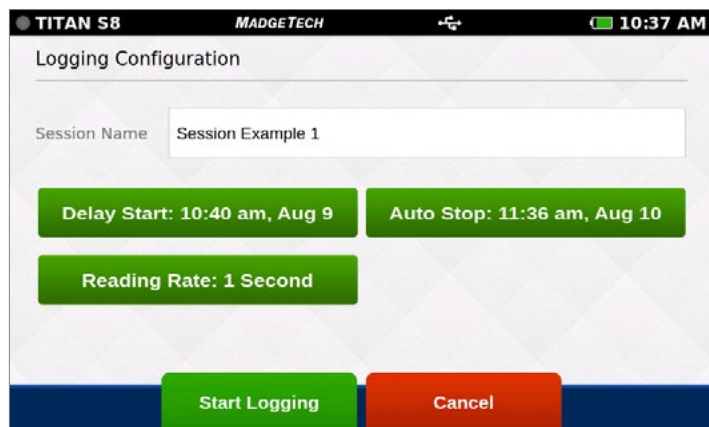


LOGGING DATA



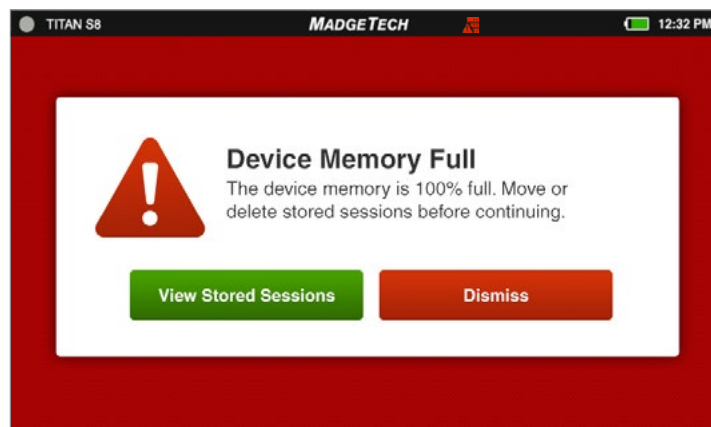
Review Session Details and Start Logging

Once the user selects a Session Name, Start Time, Stop Time and Reading Rate, the screen will look similar as it does below. Once the settings are complete, the user will select **Start Logging** to begin **Logging Mode**. After selecting **Start Logging**, the user will be brought to the **Home** screen.



Device Memory Warning

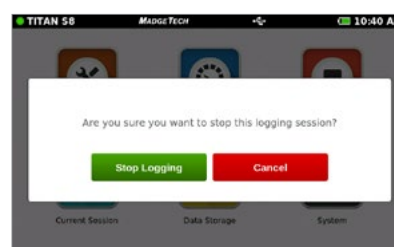
After selecting **Start Logging**, if the internal memory of the device is 100% full, the user will be notified with a pop-up warning message and two options to choose from. This warning will also appear if the internal memory of the device reaches 100% capacity while actively logging.



- **View Stored Sessions:** Takes the user to the Data Storage screen to delete or remove stored data from the device.
- **Dismiss:** Returns the user back to the Home screen and logging will not start.

Stop Logging

To manually stop a logging session, the user will select the **Stop Logging** button from the **Home** screen. **Note:** Access the Home screen at any time by pressing the Home button.



Stop Logging Confirmation

When the user selects Stop Logging, a pop-up screen will emerge prompting the user to confirm the action.

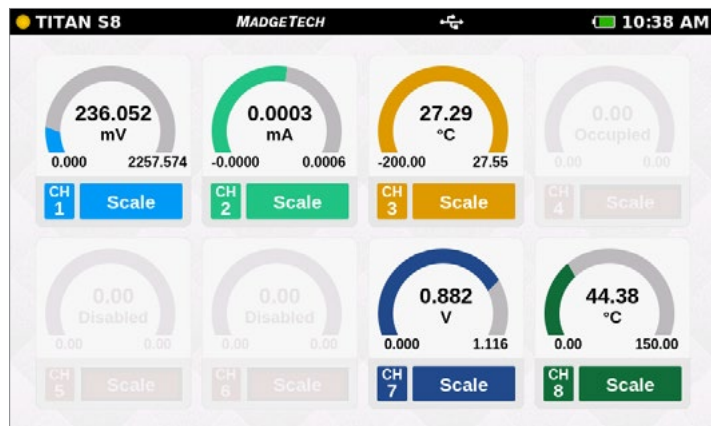
- **Stop Logging:** Ends the current logging session.
- **Cancel:** Continues logging and returns the user to the Home screen.

VIEWING DATA

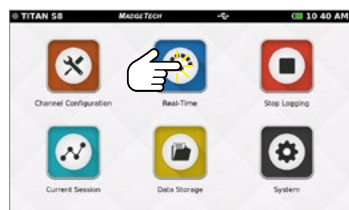


Real-Time Data

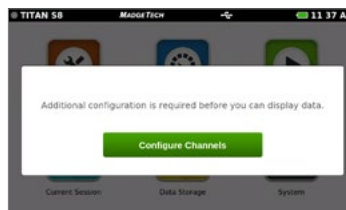
When **Real-Time** is selected from the **Home** screen, the device will display data from all enabled channels and update at the user selected reading rates. The **Real-time** view is also available from the **Current Session** menu when the device is actively logging.



- **Current Reading:** Displayed in the center of the gauge.
- **Minimum:** Displayed on the bottom left of each gauge.
- **Maximum:** Displayed on the bottom right of each gauge.
- **Zero:** (Pulse Only) Resets the displayed reading to zero.
- **Scale:** Scales the readings on the screen. Maximum value will be reset to the current value.



Select Real-Time

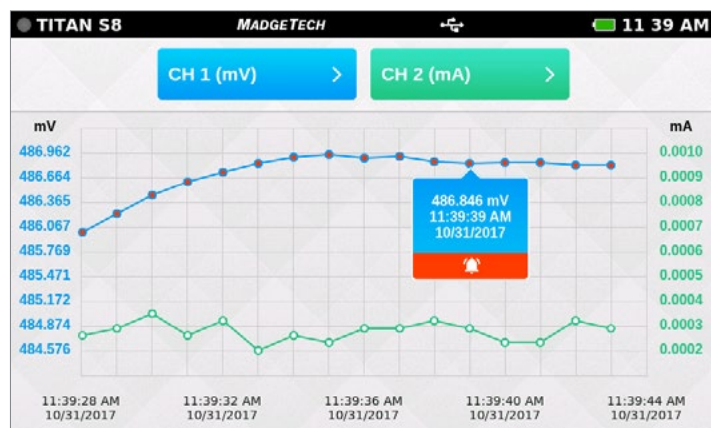


Configuration Warning

Real-Time data is only available if the device channels are configured.

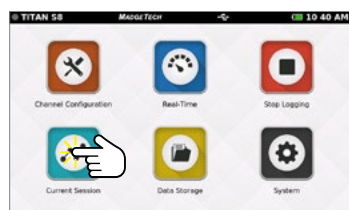
Current Session — Graph View

Select the **Current Session** button from the **Home** screen to view the recorded data in various formats, swipe the screen to the left or right to navigate.



Graph View

- Use the drop down menus at the top to select which channels to view.
- Touch any point on the graph line to display more detailed information.
- Triggered alarm events will be visible within the graph.



Select Current Session



Swipe to Navigate

Swipe Options

- Swipe left at the top of the screen to go to the tabular data view.
- Swipe within the graph to scroll through the graph timeline.

VIEWING DATA

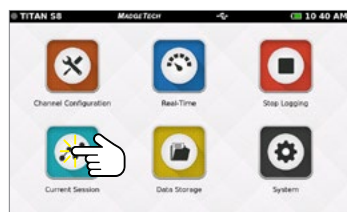


Current Session — Tabular View

Select the **Current Session** button from the **Home** screen to view the recorded data in various formats, swipe the screen to the left or right to navigate.

TITAN S8 MADGETECH 10:40 AM				
Current Data Readings				
TIME	CH 1 (mV)	CH 2 (mA)	CH 3 (°C)	CH 4 (Occupied)
MINIMUM	236.129	0.0001	26.57	-
MAXIMUM	404.517	0.0003	26.70	-
AVERAGE	283.006	0.0002	26.62	-
10:39:58 AM	282.513	0.0002	26.62	-
10:39:59 AM	282.520	0.0002	26.62	-
10:40:00 AM	282.517	0.0002	26.60	-
10:40:01 AM	282.460	0.0001	26.60	-
10:40:02 AM	282.529	0.0001	26.60	-

- Displays the Minimum, Maximum and Average values for the current session.
- Readings that exceeded user selected thresholds/alarms are displayed as red.
- Scroll vertically to see data timeline in tabular format.
- View four channels at a time.
- Swipe left at the top of the screen to see additional active channels.



Select Current Session



Swipe Left to View Tabular Data

TITAN S8 MADGETECH 10:40 AM				
Current Data Readings				
TIME	CH 1 (mV)	CH 2 (mA)	CH 3 (°C)	CH 4 (Occupied)
MINIMUM	236.129	0.0001	26.57	-
MAXIMUM	404.517	0.0003	26.70	-
AVERAGE	283.006	0.0002	26.62	-
10:39:58 AM	282.513	0.0002	26.62	-
10:39:59 AM	282.520	0.0002	26.62	-
10:40:00 AM	282.517	0.0002	26.60	-
10:40:01 AM	282.460	0.0001	26.60	-
10:40:02 AM	282.529	0.0001	26.60	-

Swipe Vertically to Scroll Timeline

TITAN S8 MADGETECH 10:40 AM				
Current Data Readings				
TIME	CH 5 (mV)	CH 6 (mA)	CH 7 (°C)	CH 8 (°C)
MINIMUM	0.876	44.38	-	-
MAXIMUM	1.795	44.38	-	-
AVERAGE	1.562	44.38	-	-
10:39:58 AM	1.729	44.38	-	-
10:39:59 AM	1.733	44.38	-	-
10:40:00 AM	1.750	44.38	-	-
10:40:01 AM	1.759	44.38	-	-
10:40:02 AM	1.750	44.38	-	-

Swipe Left for Additional Active Channels

Additional Views

Swipe left and right to rotate through the various screens.

Graph View > Tabular Views > Real-Time View > Current Session Overview

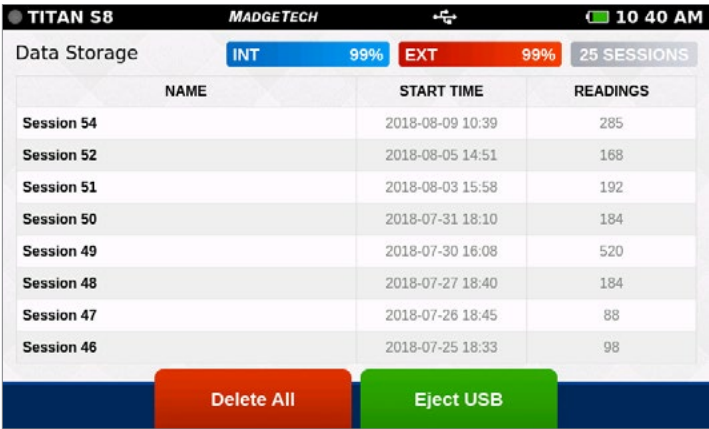
Note: Use the swipe navigation of data views for both current and stored sessions.

MANAGING DATA

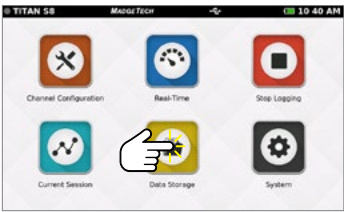


Data Storage

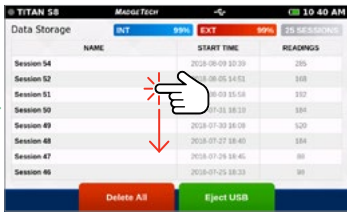
Selecting the **Data Storage** icon will bring up the screen pictured below. Stored sessions are displayed in a scrollable list. Swipe vertically to browse the list. Session Information includes the name of the session, the start time and date of the session, and the number of readings. The options available on this screen include the following:



- **INT:** Available percentage of internal memory remaining on the device.
- **EXT:** Available percentage of memory remaining on the external USB drive.
- **Number of Sessions:** The total number of stored sessions on the device.
- **Session Information:** Tap on any row to view session specific options.
- **Delete All:** Erases all stored sessions from the internal memory.
- **Eject USB:** Select this button prior to removing the external USB drive.



Select Data Storage



Swipe Vertically Through Sessions

Storage Space

Every channel configured is considered a separate reading, so the number of readings divided by the number of channels gives you the readings per channel. Maximum number of readings per session is 1,000,000 or 5,000,000 user selectable in Device Settings.

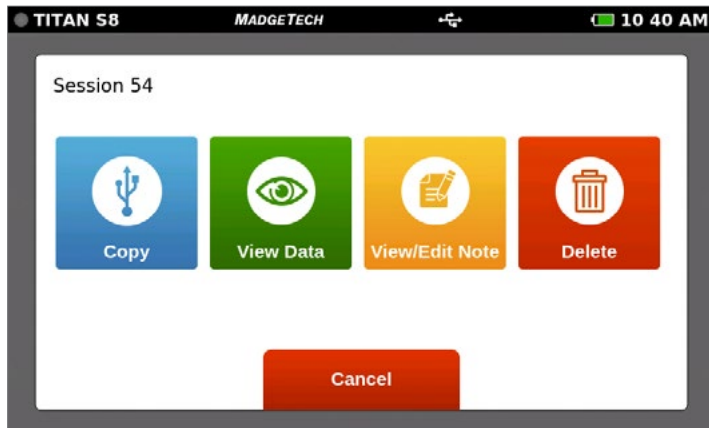
Thermocouple Channels:	Millivolt, Volt, RTD, Thermistor (NTC), Milliamp channels:	Frequency/Counter (Single Channel):
<ul style="list-style-type: none">• 1 Hz or slower — 62,000,000 to 150,000,000 readings (depends on number of configured channels) in 1,000,000 or 5,000,000 reading increments.• 4 Hz or faster — 80,000,000 to 150,000,000 readings (depends on number of configured channels) in 1,000,000 or 5,000,000 reading increments.	<ul style="list-style-type: none">• 1 Hz or slower — 93,000,000 to 164,000,000 readings (depends on number of configured channels) in 1,000,000 or 5,000,000 reading increments.• 4 Hz or faster — 150,000,000 to 173,000,000 readings (depends on number of configured channels) in 1,000,000 or 5,000,000 reading increments.	<ul style="list-style-type: none">• 1 Hz or slower — 93,000,000 readings in 1,000,000 or 5,000,000 reading increments.

MANAGING DATA

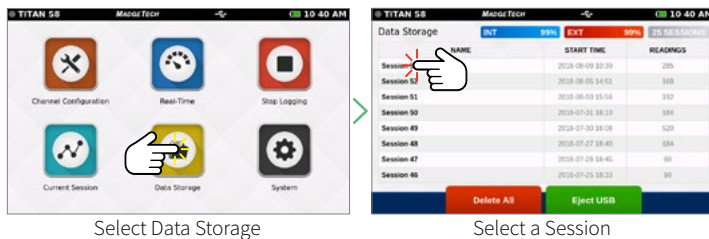


Saved Session Options

From the **Data Storage** screen, tap on any row in the list to select a specific session to view options. The **Session Options** screen features four actions the user can take on any stored session:

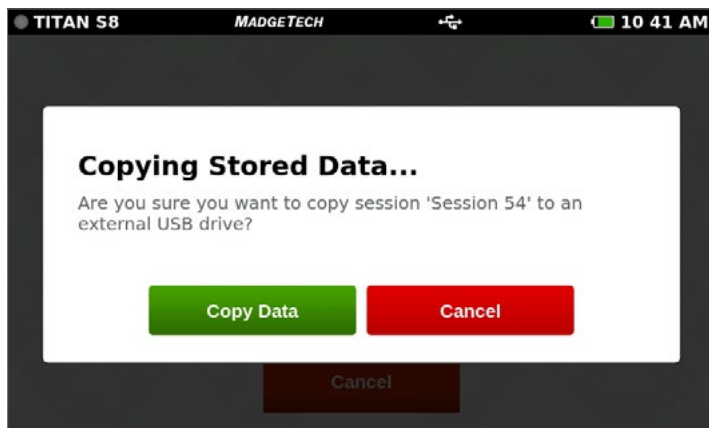


- **Copy:** Copies the stored session to an external USB drive. If no USB drive is plugged into the device, the Copy button will not display.
- **View Data:** Views the data of this session in tabular or graph view.
- **View/Edit Note:** Add notes or comments to the session.
- **Delete:** Removes the stored session from the device.



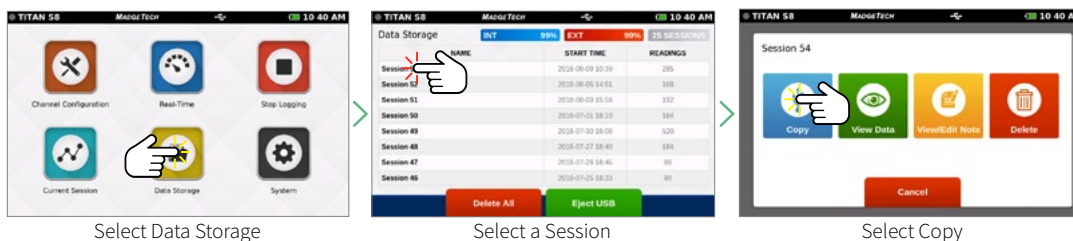
Copy Stored Sessions

Sessions can be copied from the internal device memory to an external USB drive. When the **Copy** option is selected, the **Copy Stored Session** pop-up will appear to confirm the user's request.



Note: Data can be saved to external memory as .csv and/or .mtb file format (user selectable in System/File Format). Saving as .mtb file format will allow data to be imported into MadgeTech 4 Data Logger Software (version 4.2.13.0 or greater).

- **Copy Data:** The session is copied to the external USB drive.
- **Cancel:** Cancels the copy and takes the user back to the Options screen.



MANAGING DATA



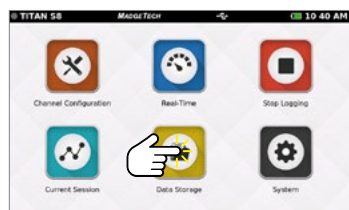
View Data Sessions

When the **View Data** option is selected, the user is presented with the **Tabular Data** view of that session. From this screen the user can swipe left and right to navigate other views of the recorded data from that session (see swipe navigation options on [page 17](#)).

TITAN S8 **MADGETECH** 10:40 AM

Current Data Readings

TIME	CH 1 (mV)	CH 2 (mA)	CH 3 (°C)	CH 4 (Occupied)
MINIMUM	236.129	0.0001	26.57	-
MAXIMUM	404.517	0.0003	26.70	-
AVERAGE	283.006	0.0002	26.62	-
10:39:58 AM	282.513	0.0002	26.62	-
10:39:59 AM	282.520	0.0002	26.62	-
10:40:00 AM	282.517	0.0002	26.60	-
10:40:01 AM	282.460	0.0001	26.60	-
10:40:02 AM	282.529	0.0001	26.60	-



Select Data Storage

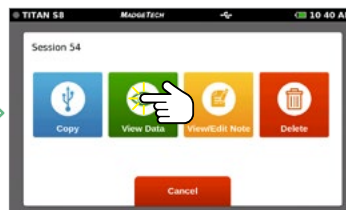
TITAN S8 **MADGETECH** 10:40 AM

Data Storage

Session	NAME	START TIME	READINGS
Session 54		2018-08-09 10:39	285
Session 52		2018-08-05 14:02	168
Session 51		2018-08-03 15:08	197
Session 50		2018-07-31 18:10	184
Session 49		2018-07-30 18:08	129
Session 48		2018-07-27 18:40	184
Session 47		2018-07-26 18:40	88
Session 46		2018-07-25 18:33	91

Delete All Eject USB

Select a Session



Select View Data

View/Edit Note

When the **View/Edit Note** option is selected, the user is presented with a text entry screen. Text entered here is stored as a note associated with a particular session. This can be accessed and edited by users as desired:

TITAN S8 **MADGETECH** 10:41 AM

Add Note

Press here to start entering text.

And press here to stop entering text.

Save Cancel

TITAN S8 **MADGETECH** 10:41 AM

Data Storage

Session	NAME	START TIME	READINGS
Session 54		2018-08-09 10:39	285
Session 52		2018-08-05 14:02	168
Session 51		2018-08-03 15:08	197
Session 50		2018-07-31 18:10	184
Session 49		2018-07-30 18:08	129
Session 48		2018-07-27 18:40	184
Session 47		2018-07-26 18:40	88
Session 46		2018-07-25 18:33	91

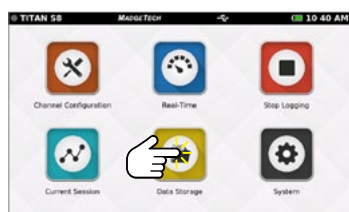
Delete All Eject USB

Note Flag

When a note has been added to a logging session, a notes icon appears in the list of sessions.

Delete a Note

To delete a note, edit to remove all text and click **Save**.



Select Data Storage

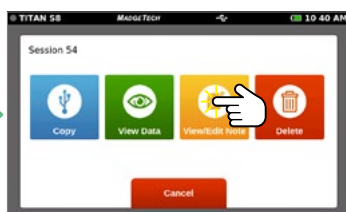
TITAN S8 **MADGETECH** 10:40 AM

Data Storage

Session	NAME	START TIME	READINGS
Session 54		2018-08-09 10:39	285
Session 52		2018-08-05 14:02	168
Session 51		2018-08-03 15:08	197
Session 50		2018-07-31 18:10	184
Session 49		2018-07-30 18:08	129
Session 48		2018-07-27 18:40	184
Session 47		2018-07-26 18:40	88
Session 46		2018-07-25 18:33	91

Delete All Eject USB

Select a Session



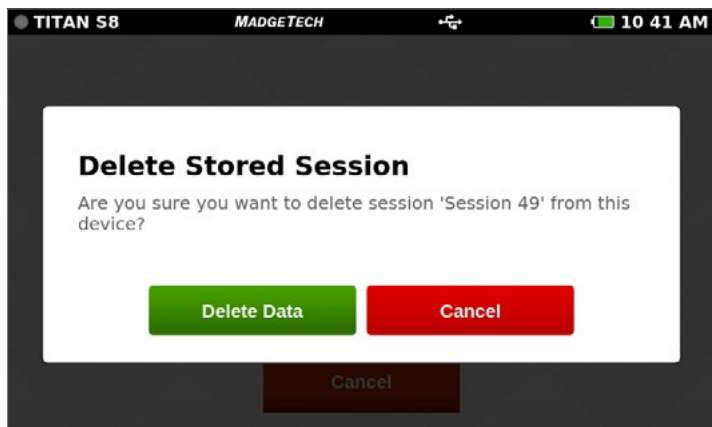
Select View/Edit Note

MANAGING DATA



Delete Stored Session

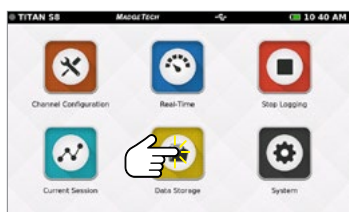
When the **Delete** session option is selected, the user is presented with a pop-up screen confirming the request:



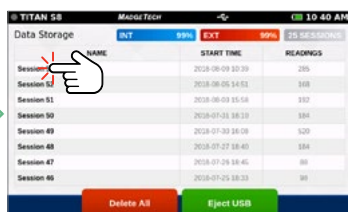
Deleting Stored Data Confirmation

When Delete Data is selected a pop-up screen will display a progress bar and confirm when action is complete. After data is successfully removed the user will be returned to the Data Storage screen.

Warning: Deleting a session is a permanent action.



Select Data Storage



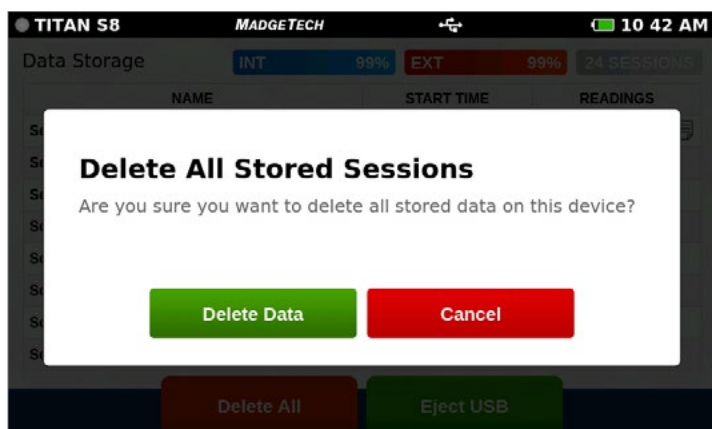
Select a Session



Select Delete

Delete All

If a user selects the **Delete All** option, they will be presented with a confirmation screen. Selecting **Cancel** will return the user to the **Data Storage** screen and the stored data will not be deleted.



Select Data Storage



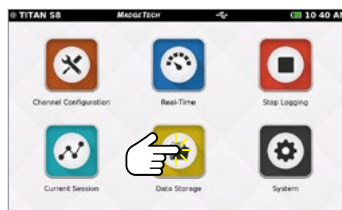
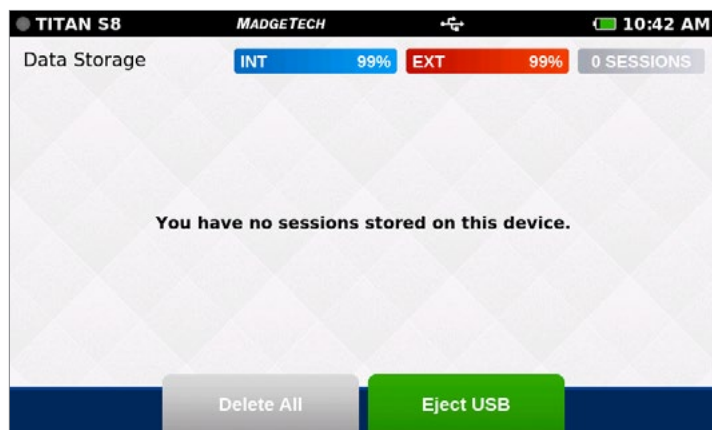
Select Delete All

MANAGING DATA



No Stored Sessions

Before first use or after all data has been deleted, the **Data Storage** screen on the device will resemble the screen shown below:



Select Data Storage

DEVICE SETTINGS



Device Settings

When the **System** button is selected from the **Home** screen, the user is presented with options, preferences and information as shown below. The **System** panel displays an overview of information specific to the device including:

TITAN S8 MADGETECH 10:43 AM	
Device Settings	System Information
System	Hardware Version D.4.0.A.4.0
File Format	Software Version K.5.9.D.4.3.A.4.0
Date & Time	Serial Number Q60610
Display	Internal Memory Used 3.0 MB
Alarms	Internal Memory Free 1,853.7 MB
Help	Stored Sessions 0
Power	Factory Calibration 04/24/2018

- Hardware Version
- Software Version
- Serial Number
- Internal Memory Used and Available
- Number of Stored Sessions
- Factory Calibration Date



Select System

TITAN S8 MADGETECH 10:43 AM	
Device Settings	File Format
System	USB Flash File Format
File Format	<input type="checkbox"/> CSV Spreadsheet <input type="checkbox"/> MTB <input checked="" type="checkbox"/> Both
Date & Time	Data Logging File Readings Limit
Display	<input type="checkbox"/> 1 Million <input checked="" type="checkbox"/> 5 Million
Alarms	
Help	
Power	

File Format

Data from the Titan S8 can be saved to external memory in one of two formats.

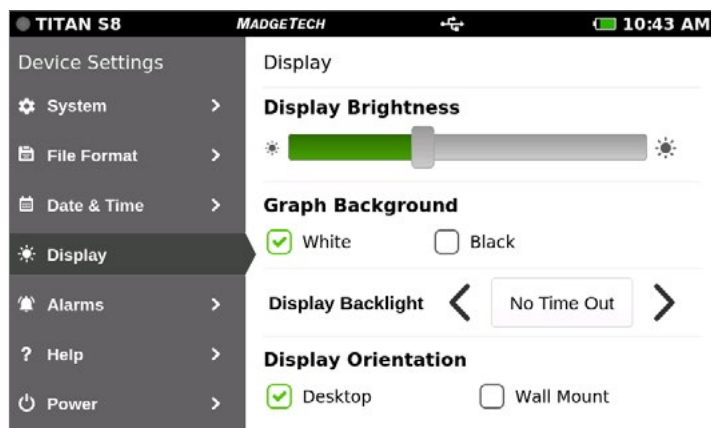
- **USB Flash File Format:** .csv spreadsheet, .mtb file (for import into MadgeTech 4 Data Logger Software version 4.2.13.0 or greater) or both.
- **Data Logging File Readings Limit:** Choose between 1 million or 5 million file readings limit.

TITAN S8 MADGETECH 10:43 AM	
Device Settings	Time Format
System	<input checked="" type="checkbox"/> 12-Hour Clock <input type="checkbox"/> 24-Hour Clock
File Format	Date
Date & Time	August 9, 2018
Display	Time
Alarms	10:43 AM
Help	
Power	

Date & Time

The **Date & Time** screen will display the current date and time as well as provide the user with 12-Hour or 24-Hour clock options.

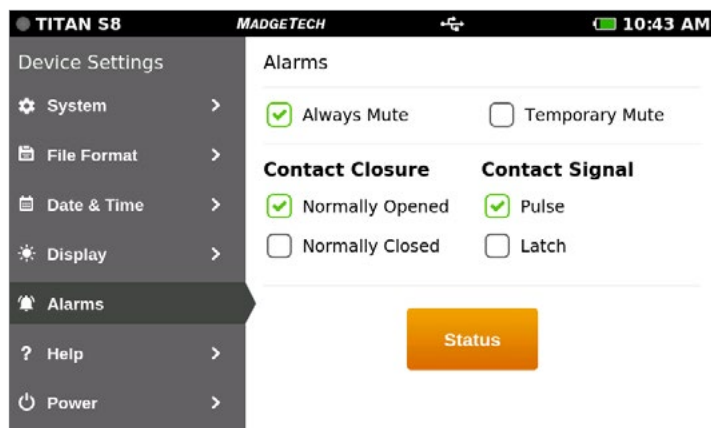
DEVICE SETTINGS



Display

The **Display** screen allows the user to adjust options for the touch-screen display including:

- **Display Brightness:** User adjustable screen brightness level.
- **Graph background:** Select white or black.
- **Display Backlight:** User selectable timeout period.
- **Display Orientation:** Changing the display orientation requires a reboot of the device.



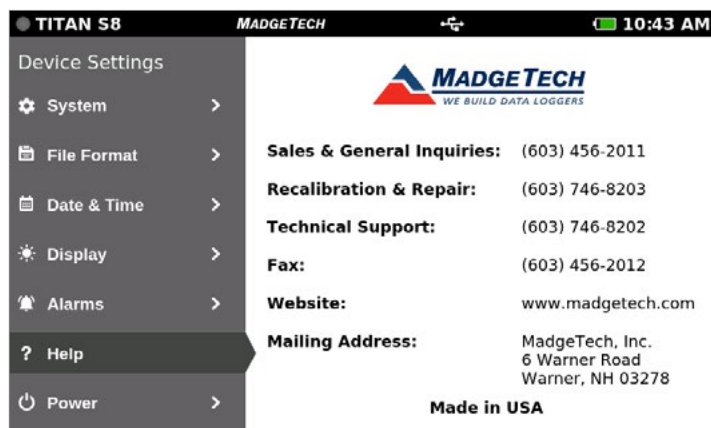
Alarms

The **Alarms** screen provides the user with two **Contact Closure** options for when an alarm is triggered.

- **Always/Temporary Mute**
- **Contact Closure:** Normally Open / Closed
- **Contact Signal:** Pulse / Latch
- **Status:** Shows if there are any alarms triggered.

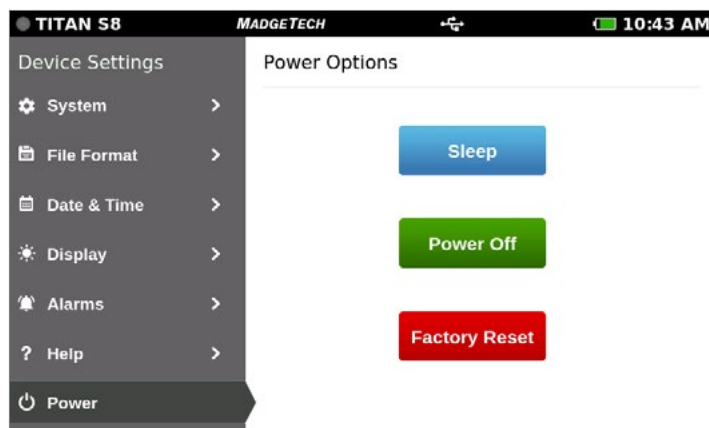
Help

Provides MadgeTech's contact information to the user.



Power

Provides sleep mode, power off via screen and factory reset.



Warning: Factory reset will restore the unit to Factory Settings. This will delete all saved sessions and configurations.

SPECIFICATIONS



GENERAL	
Dimensions	6.65 in x 4.40 in x 1.41 in (168.9 mm x 111.8 mm x 35.8 mm) <i>Data logger only</i>
Touch Screen Dimensions	5 inches
Number of Channels	8
Weight	1.3 lbs (20.8 oz)
IP Rating	IP20
Start Modes	Immediate Start & Delay Start
Memory	1,000,000 or 5,000,000 readings
Battery Type	Rechargeable 3.7 V Lithium Ion Battery Pack
Battery Life	<ul style="list-style-type: none"> Continuous on-screen sampling: 7-9 hours depending on display setting and reading rate Stand-by mode: 100 hours
Data Format	Exported .csv file format, .mtb or both
Time Accuracy	±1 minute/month
Operating Environment	0 °C to +50 °C (32 °F to +122 °F) 0 %RH to 95 %RH non-condensing
Enclosure Material	Polycarbonate, TPE Protective Boot
Calibration	Factory calibration is recommended annually

0 - 24 mA	
Range	-5 mA to 50 mA
Resolution	0.0001 mA
Accuracy	±0.024 mA (0 to 24 mA)
Input Impedance	30 Ω

0 - 100 mV	
Range	-100 mV to 2450 mV
Resolution	0.0001 mV
Accuracy	±0.1 mV (0 to 100 mV)
Input Impedance	1 GΩ
Maximum Voltage	3.0 V

0 - 10 V	
Range	-0.5 V to 12.0 V
Resolution	0.0001 V
Accuracy	± 0.01 V (-0.5 V to 12.0 V)
Input Impedance	1 GΩ
Maximum Voltage	25 V

Specifications subject to change. See TIPTEMP's Terms and Conditions at www.tiptemp.com.

FREQUENCY / PULSE	
Maximum Count	4,000,000,000
Maximum Frequency	25 KHz
Input Signal	0 V to 12 V
Input Impedance	58 KΩ
TEMPERATURE PT-100 (2-WIRE RTD) (0.00385 CURVE)	
Range	-25 °C to +850 °C (Probe Dependent) (18.5 Ω to 390.5 Ω)
Resolution	0.01 °C
Accuracy	±0.1 °C (-200 °C to +400 °C) (Probe Dependent) ±0.034 Ω (18.5 Ω to 247.1 Ω)
TEMPERATURE PT-100 (3-WIRE RTD) (0.00385 CURVE)	
Range	-25 °C to +850 °C (Probe Dependent) (18.5 Ω to 390.5 Ω)
Resolution	0.01 °C
Accuracy	±0.1 °C (-200 °C to +400 °C) (Probe Dependent) ±0.034 Ω (18.5 Ω to 247.1 Ω)
TEMPERATURE PT-100 (4-WIRE RTD) (0.00385 CURVE)	
Range	-25 °C to +850 °C (Probe Dependent) (18.5 Ω to 390.5 Ω)
Resolution	0.01 °C
Accuracy	±0.1 °C (-200 °C to +400 °C) (Probe Dependent) ±0.034 Ω (18.5 Ω to 247.1 Ω)
TEMPERATURE NTC-1 (2252)	
Range	-25 °C to +150 °C (Probe Dependent) (29,380 Ω to 41.9 Ω)
Resolution	0.01 °C
Accuracy	±0.50% FSR (Probe Dependent)
TEMPERATURE NTC-2 (10K)	
Range	-25 °C to +150 °C (Probe Dependent) (102,900 Ω to 238 Ω)
Resolution	0.01 °C
Accuracy	±0.50% FSR (Probe Dependent)

RTD Note (All RTD Configurations)

Temperature Specifications based on ideal 100 Ω PT RTD Compliant with IEC 751(1983) and ITS-90. Accuracy based on 4-wire configuration.

BATTERY WARNING: Battery may explode or fire if mistreated. Do not disassemble or dispose of in fire. Do not charge except specified with charging condition. Do not heat above 212 °F, or short circuit. Do not crush or modify.

SPECIFICATIONS



THERMOCOUPLE TYPE	RANGE	RESOLUTION	ACCURACY
J	-200 °C to +760 °C	0.1 °C	±0.5 °C
K	-270 °C to +1370 °C	0.1 °C	±0.5 °C
T	-270 °C to +400 °C	0.1 °C	±0.5 °C
E	-270 °C to +980 °C	0.1 °C	±0.5 °C
R	-50 °C to +1760 °C	0.5 °C	±2.0 °C
S	-50 °C to +1760 °C	0.5 °C	±2.0 °C
N	-270 °C to +1300 °C	0.1 °C	±0.5 °C
B	50 °C to 1820 °C	0.5 °C	±2.0 °C

Measurement Accuracy

- At room temperature (25 °C ±10 °C) after 60 minute warm-up period.
- Temperature calibrated accuracy is thermocouple dependent.
- Accuracy does not include Cold Junction Compensation (CJC). CJC error: ±1.5 °C

Reading Rate Information

All channels will use the same reading rate.

Reading rates will be capped at 4 Hz when a temperature channel is selected.

- 4 KHz (Supports single channel of voltage or current measurement only)
- 2 KHz (Supports single channel of voltage or current measurement only)
- 1 KHz (Supports single channel of voltage or current measurement only)
- 500 Hz (Supports single channel of voltage or current measurement only)
- 250 Hz (Supports single channel of voltage or current measurement only)
- 100 Hz (Supports single channel of voltage or current measurement only)
- 50 Hz (Supports single channel of voltage or current measurement only)
- 25 Hz (Supports single channel of voltage or current measurement only)
- 10 Hz (Supports multiple channels of voltage or current measurement only)
- 4 Hz
- 1 Second
- 2 Seconds
- 5 Seconds
- 10 Seconds
- 15 Seconds
- 30 Seconds
- 1 Minute
- 2 Minutes
- 5 Minutes
- 10 Minutes
- 15 Minutes
- 30 Minutes
- 1 Hour
- 2 Hours
- 5 Hours
- 10 Hours
- 12 Hours
- 24 Hours

INDEX



Product Overview.....	2	Viewing Data	17
Device Overview	2	Real-Time Data	17
External Features	2	Current Session — Graph View	17
Device Orientation	3	Current Session — Tabular View	18
Device Ports	3		
Sensor Types & Measurement Ranges	4	Managing Data	19
Powering, Charging & Downloading Data	4	Data Storage.....	19
		Storage Space	19
User Interface	5	Saved Session Options.....	20
Top Menu Bar	5	Copy Stored Sessions.....	20
Home Screen	5	View Data Sessions	21
First Time Use.....	6	View / Edit Note	21
Select Screen Orientation	6	Delete Storage Sessions.....	22
Set Up Date & Time	6	Delete All	22
Channel Configuration	7	No Stored Sessions.....	23
Channel Setup	7		
Measurement Setup	8	Device Settings.....	24
Measurement Units	8	System	24
Engineering Units	9	File Format.....	24
Setting Up Engineering Units.....	10	Date & Time	24
Keyboard Function	11	Display	25
Alarms	11	Alarms.....	25
Factory Calibration	12	Help.....	25
Channel Configuration Overview	12	Power.....	25
Save Configuration Settings	13	Technical Specifications	26
Load Configuration Settings	13	Battery Life.....	26
Wiring Diagram	13	Reading Rate Information.....	27
Logging Data	14	Need Help?	29
Start Logging	14	Device Maintenance.....	29
Delayed Start	14	Product Support & Troubleshooting Contact.....	29
Automatic Stop	15		
Reading Rate	15		
Review Session Details and Start Logging	16		
Device Memory Warning	16		
Stop Logging	16		

NEED HELP?

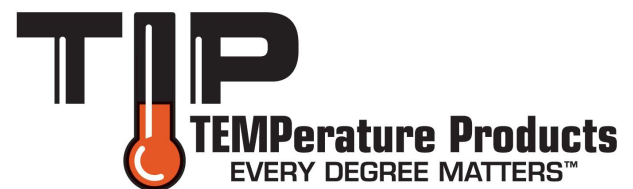


Device Maintenance:

- To provide optimum performance and accuracy, MadgeTech recommends an annual factory calibration for the Titan S8.
- To send a device back to MadgeTech for calibration or repair, please visit the MadgeTech website at <http://www.tiptemp.com/Products/Calibration-Equipment-and-services/>.

Product Support & Troubleshooting:

- Visit our Knowledge Base online at www.tiptemp.com.
- Contact our friendly Customer Support Team at 1-800-TIP-TEMP or tech-support@tiptemp.com.



TIP TEMPerature Products

340 W Broad Street
Burlington, NJ 08016
1-800-TIP-TEMP
everydegreematters@tiptemp.com
www.tiptemp.com