

EL-WiFi-T

WiFi Temperature Sensor

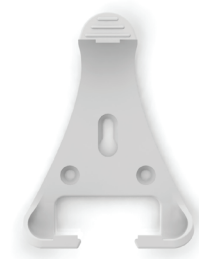
ORDERING INFORMATION

WiFi Temperature
Sensor

EL-WiFi-T

FEATURES

- Built in temperature sensor with WiFi capability and integrated display
- Temperature selection in °C or °F
- Data can be viewed via the graphing tool or can be exported to Excel
- Operating range from -20 to +60 °C (-4 to +140 °F)
- Configurable high and low alarms with indicator
- Wireless connectivity to PC via WiFi
- Easy sensor set-up using free PC software application
- Max & Min readings
- View and analyze multiple sensors using the PC application, including immediate graphing of historic data
- 802.11b compliant
- Protection rating IP55
- Rechargeable internal lithium polymer battery
- Fully featured LCD segment display
- Low battery indicator
- WiFi connection indicator
- USB port used for recharging (can only be recharged when the unit is between 0 - 40 °C)
- Wall bracket
- Supported Security Protocols WEP, WPA/WPA2 – PSK



The EL-WiFi-T sensor measures the temperature of the environment in which it is situated. Data is transmitted wirelessly via a WiFi network to a PC and viewed via the graphing tool or can be exported to Excel.

The software installed on the PC will allow set up, data logging and data review. Set up features will include sensor name, °C/°F, sample rate, and high/low alarms. This software is available to download for free from www.TIPtemp.com

During configuration, the sensor will search for an existing wireless network whilst physically connected to the PC. It can then be placed anywhere within range of the network. If the sensor temporarily loses connectivity with the network, it will log readings until it is able to communicate again with the PC application (max 120 days at 10 second sample interval). The range of the sensor can be increased by using WiFi extenders.

The EL-WiFi-T is a low powered battery device. When configured using typical transmission periods (e.g. once every 5 minutes) the sensor will operate for over one year. The battery can then be recharged via a PC or USB +5V wall adapter using the USB lead provided.

www.TIPtemp.com

EL-WiFi-T

WiFi Temperature Sensor

The sensor stands alone by itself on a horizontal surface and comes with a wall bracket that can be screwed onto a wall or flat surface. The sensor clips into the bracket.

Specifications	Minimum	Typical	Maximum	Unit
Battery life		>1*		Year
USB supply voltage	4.5v		5.5v	V d.c.
Temperature measurement range	-20 (-4)		+60 (+140)	°C (°F)
Internal resolution		±0.1		°C (°F)
Temperature accuracy (overall error between -10 °C and +60 °C)		±1.0 (1.8)		°C
Logging rate (user configurable)	Every 10s	30 seconds	Every 12hrs	Transmission rate
Operating temperature range	-20 (-4)		+60 (+140)	°C (°F)

* Typical but will be less if frequent transmissions

Warning - do not exceed operating temperatures

PHYSICAL DIMENSIONS

All dimensions in inches (mm)



www.TIPtemp.com