

# Installation Guide for ICON

for Windows XP, Windows Vista and Windows 7



*INOR USB Interface is a non-Ex-approved product but is intended to be used for all type of transmitters when in safe areas.*



*Do not connect the USB Interface to your USB port until prompted.*



*If you are updating your ConSoft software, make sure your USB Interface has firmware 1.2.00 or higher.*

*Version control:*

- *Connect the USB Interface to a PC*
- *Start ConSoft*
- *Click "About" or "Help" – "About"*



The installation guide must be read prior to installation.

## Table of contents.

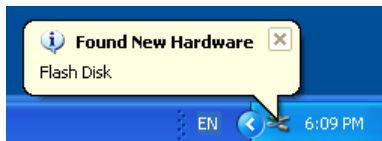
1. Open INOR Setup Menu (XP) .....	3
2. Open INOR Setup Menu (Vista).....	4
3. Open INOR Setup Menu (Windows 7) .....	7
4. Installing drivers for the USB Interface.....	10
5. Installing configuration software ConSoft.....	12
6. Installing external configuration softwares .....	16
7. Troubleshooting .....	17

## 1. Open INOR Setup Menu Windows XP

### 1.1. For software and drivers located on a USB memory stick

- 1.1.1. Insert the USB memory stick into a USB port.

*The first time the memory stick is connected to your PC it will be automatically installed. A message will pop up down in the right corner of the screen during installation, just wait.*



- 1.1.2. Wait a few seconds, the computer will display a menu of actions to perform as shown in figure 1.1.2.
- 1.1.3. Select "Start INOR setup". Click on [OK]. The **INOR Setup Menu** will start as shown in figure 1.1.3.

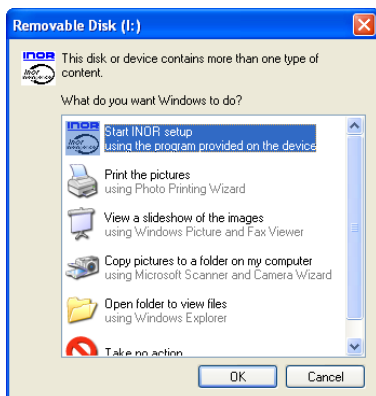


Figure 1.1.2

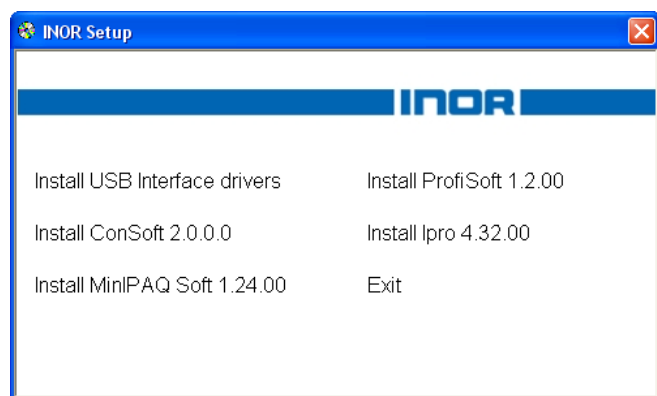


Figure 1.1.3

### 1.2. For software and drivers downloaded from [www.inor.com](http://www.inor.com)

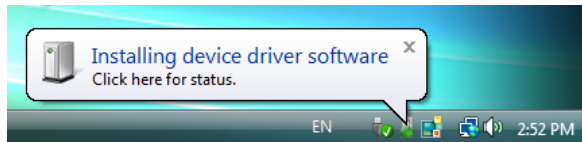
- 1.2.1. When you are downloading the files from internet you may get the options to [Run] or [Save]. By choosing [Run], the setup process starts once the setup file is downloaded.  
If you selected [Save], double click on the downloaded file.  
Depending on your Windows security settings you may see a Security Warning box, if so, click on [Run].
- 1.2.2. The files will begin to extract. After extracting the files the **INOR Setup Menu** will start as shown in figure 1.1.3.

## 2. Open INOR Setup Menu Windows Vista

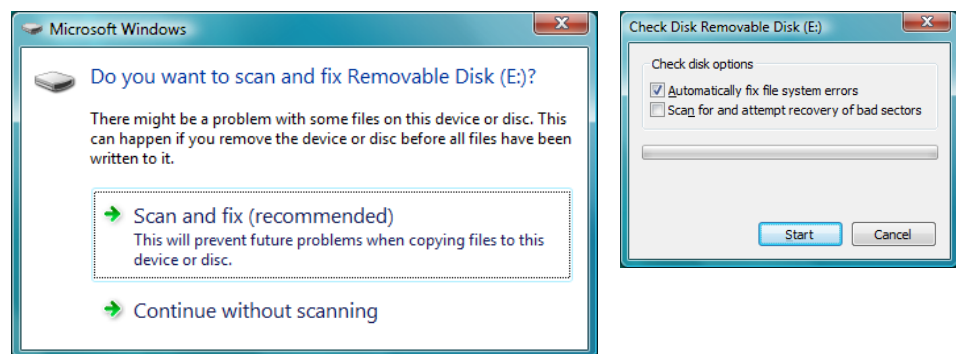
### 2.1. For software and drivers located on a USB memory stick

2.1.1. Insert the USB memory stick into a USB port.

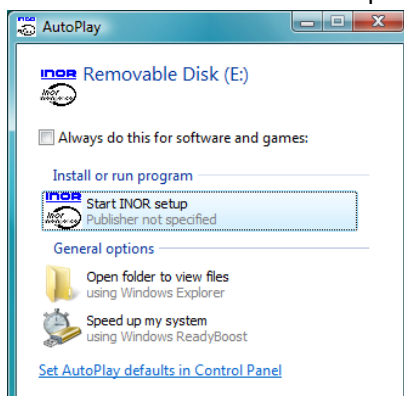
*The first time the memory stick is connected to your PC it will be automatically installed. A message will pop up down in the right corner of the screen during installation, just wait.*



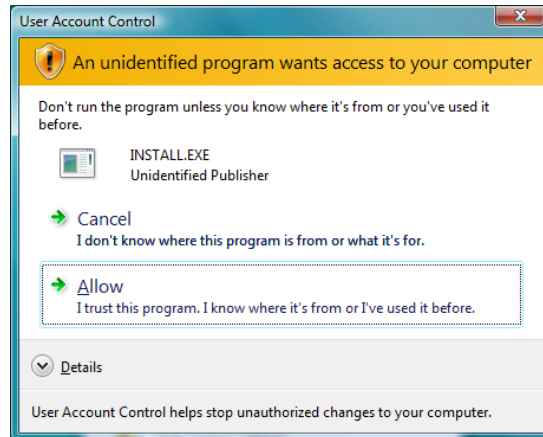
2.1.1.1. If the **Do you want to scan and fix Removable Disk?** message is displayed, choose "Scan and fix (recommended)". Then click [Start]. After scanning, remove the USB memory and connect it again.



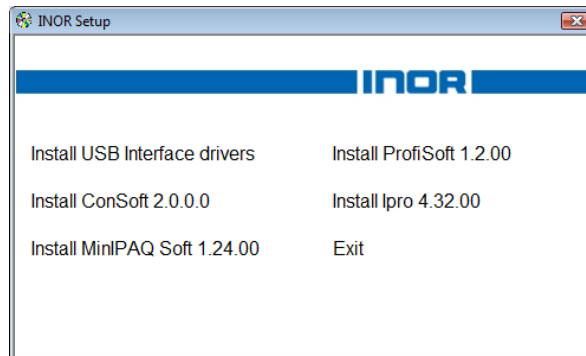
2.1.2. The computer will display a menu of actions to perform. Click on "Start INOR setup".



- 2.1.3. Depending on your Windows security settings a **User Account Control** dialog box may be displayed. Click on “Allow”.



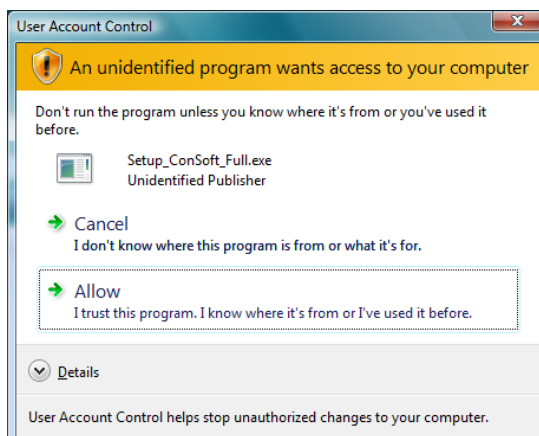
- 2.1.4. The **INOR Setup Menu** is displayed.



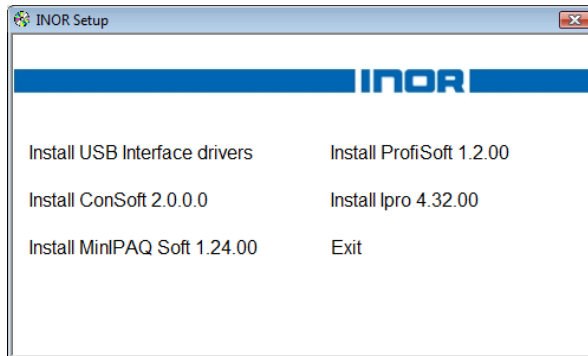
## 2.2. For software and drivers downloaded from [www.inor.com](http://www.inor.com)

- 2.2.1. When you are downloading the files from internet you may get the options to [Run] or [Save]. By choosing [Run], the setup process starts once the setup file is downloaded.  
If you selected [Save], double click on the downloaded file.

Depending on your Windows security settings a **User Account Control** dialog box may be displayed. Click on “Allow”.



- 2.2.2. The files will begin to extract.  
After extracting the files the **INOR Setup Menu** will start as shown.

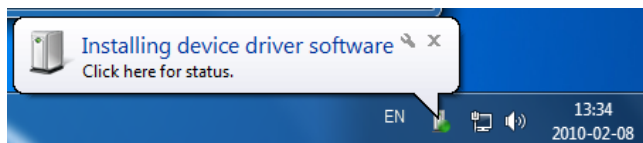


### 3. Open INOR Setup Menu Windows 7

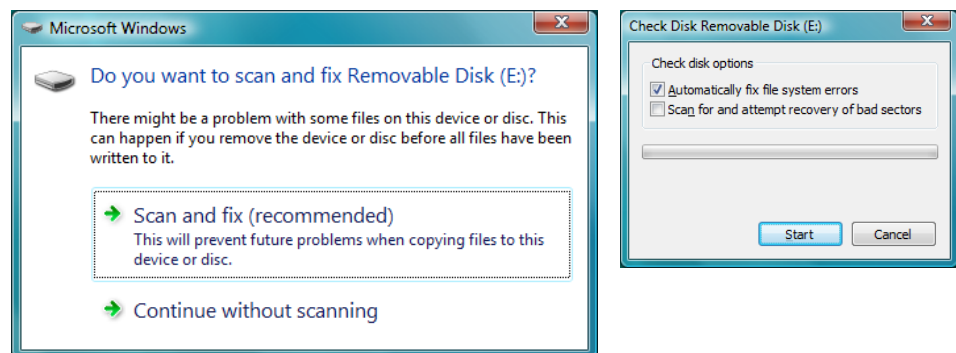
#### 3.1. For software and drivers located on a USB memory stick

##### 3.1.1. Insert the USB memory stick into a USB port.

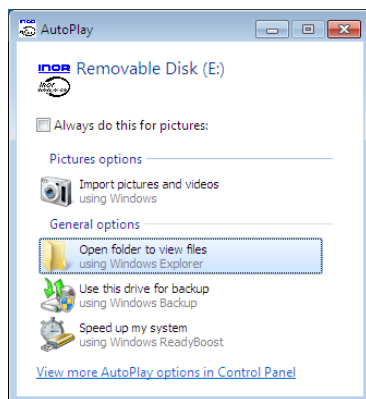
*The first time the memory stick is connected to your PC it will be automatically installed. A message will pop up down in the right corner of the screen during installation, just wait.*



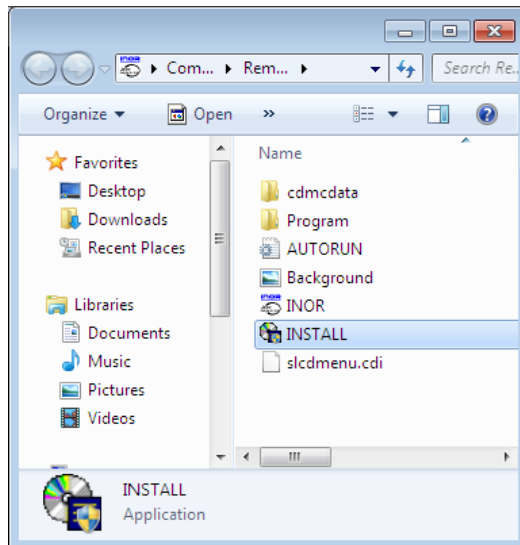
##### 3.1.1.1. If the **Do you want to scan and fix Removable Disk?** message is displayed, choose "Scan and fix (recommended)". Then click [Start]. After scanning, remove the USB memory and connect it again.



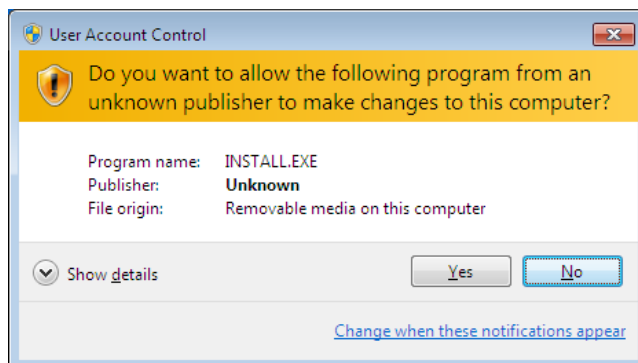
##### 3.1.2. The computer will display a menu of actions to perform. Click on "Open folder to view files".



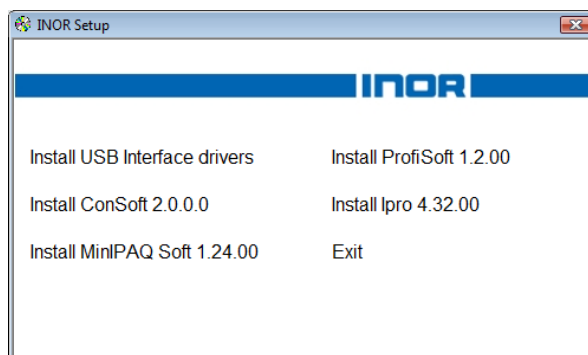
- 3.1.3. The computer will display a folder.  
Double click on "INSTALL".



- 3.1.4. Depending on your Windows security settings a **User Account Control** dialog box may be displayed. Click on [Yes].



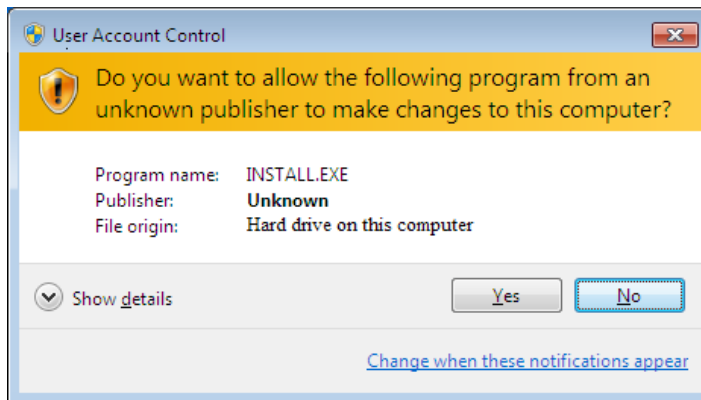
- 3.1.5. The **INOR Setup Menu** is displayed.



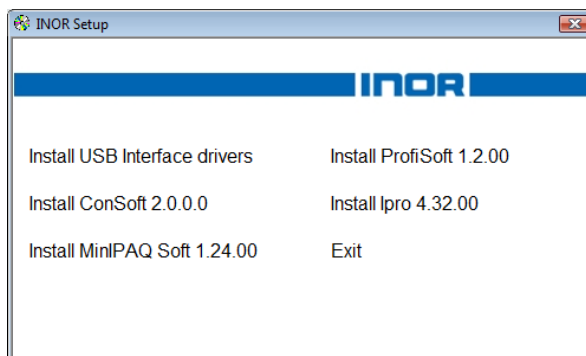


### 3.2. For software and drivers downloaded from [www.inor.com](http://www.inor.com)

- 3.2.1. When you are downloading the files from internet you may get the options to [Run] or [Save].  
By choosing [Run], the setup process starts once the setup file is downloaded.  
If you selected [Save], double click on the downloaded file.  
Depending on your Windows security settings you may see a Security Warning box, if so, click on [Run].
- 3.2.2. Depending on your Windows security settings a **User Account Control** dialog Box may be display. Click on “Yes”.



- 3.2.3. The files will begin to extract.  
After extracting the files the **INOR Setup Menu** will start as shown.



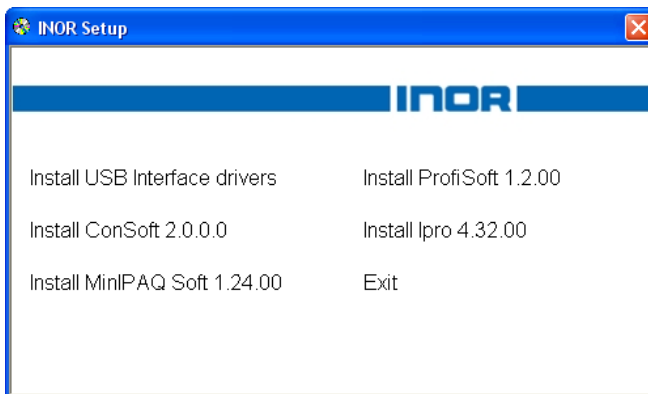
## 4. Installing drivers for the USB Interface



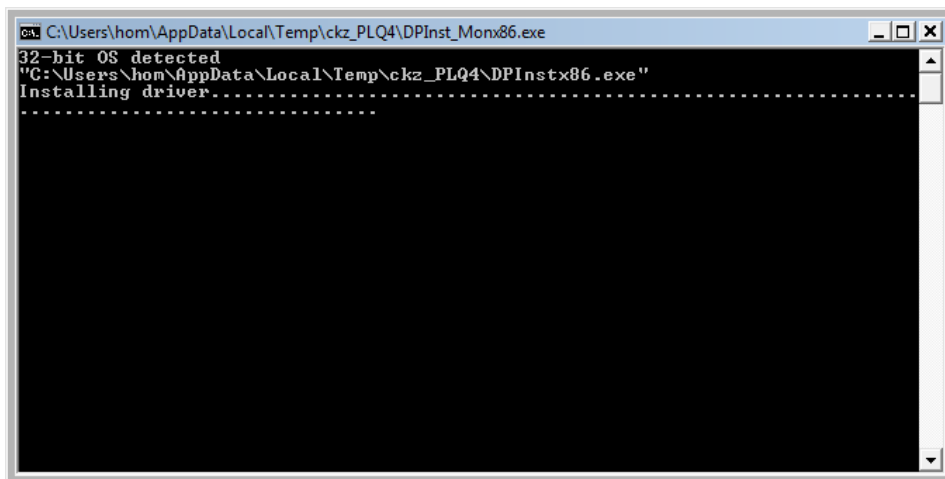
*Note! If you are only updating your ConSoft software, skip this chapter. Your old driver installation is still valid!*

***Make sure your USB interface is not plugged in before driver installation.***

4.1. Click on “Install USB Interface drivers” in INOR Setup Menu.

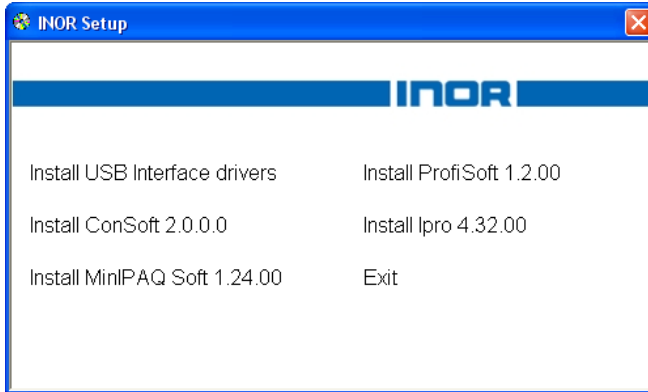


4.1.1. The installation procedure for the drivers will start and a window similar as below will open.



Wait until this automatic procedure ends. It will take a few minutes. Then the window closes and the installation of the interface can continue.

- 4.2. Drivers for INOR USB Interface are now prepared to be installed.
- 4.3. Connect the USB Interface and the installation will complete and be ready to use.
- 4.4. You are back to INOR Setup Menu.



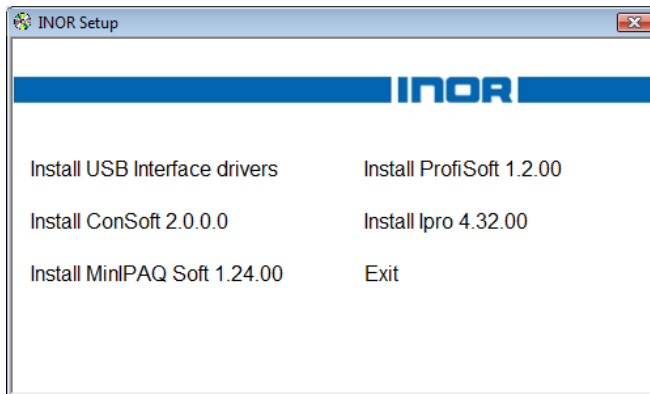
## 5. Installing configuration software ConSoft



*Note! If you are updating your ConSoft software, make sure your USB Interface has firmware 1.2.01 or higher.*

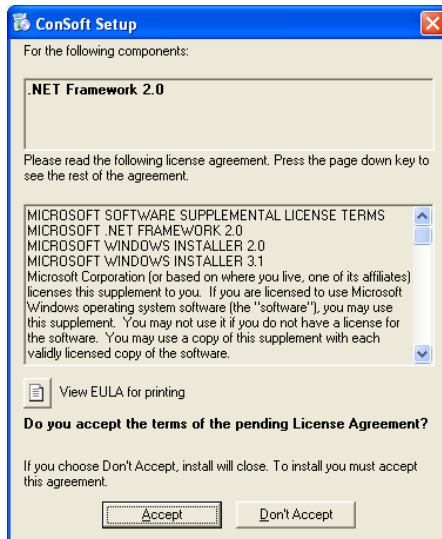
*Version control: Connect the USB Interface to a PC, start ConSoft, click "About" or "Help" – "About".*

### 5.1. Click on "Install ConSoft" from INOR Setup Menu.

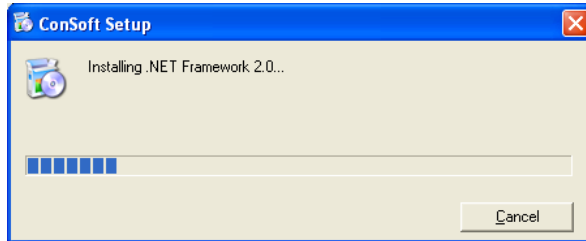


5.1.1. If you don't have Microsoft .NET Framework installed on your computer, a message box displays prompting you to install it. Click on [Accept].

If you already have Microsoft .NET Framework installed on your computer the installation will continue on step 5.2.



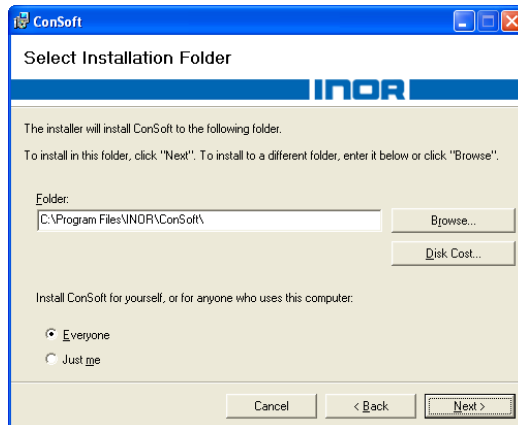
- 5.1.2. Installation of .NET Framework starts.  
When the .NET framework install has finished, the ConSoft Setup Wizard will start.



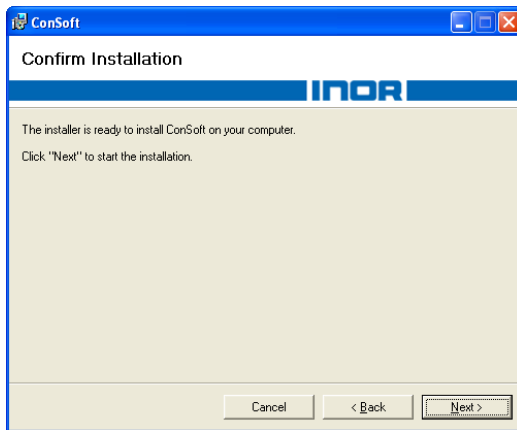
- 5.2. ConSoft Setup Wizard starts.  
Click on [Next].



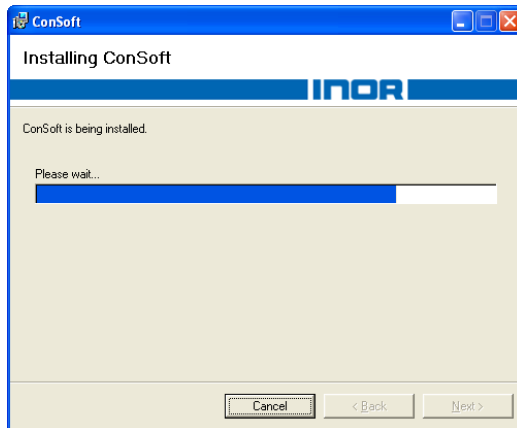
- 5.3. The Wizard continues, click on [Next].



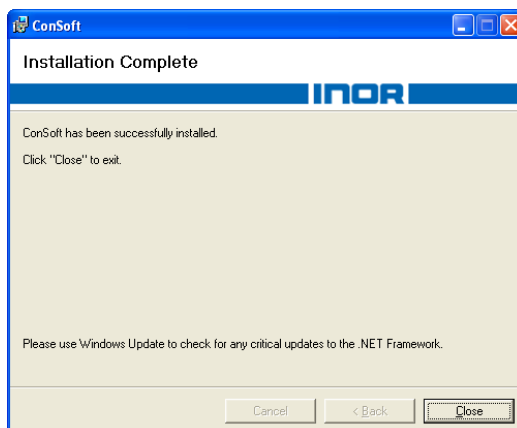
#### 5.4. Confirm installation, click on [Next].



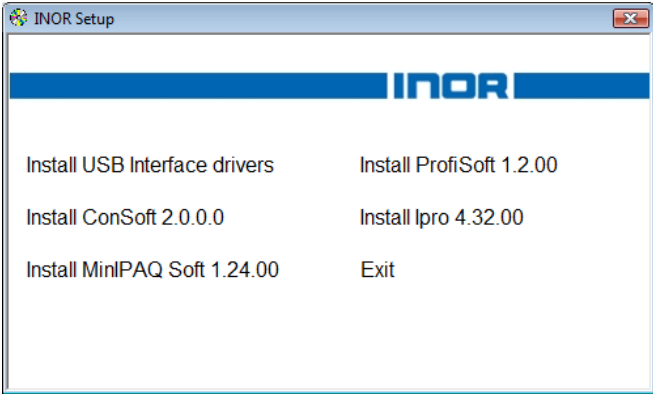
#### 5.5. Installation of ConSoft.



#### 5.6. Installation Complete message will be displayed when the installation is complete. Click on [Close].



5.7. Back to INOR Setup Menu.



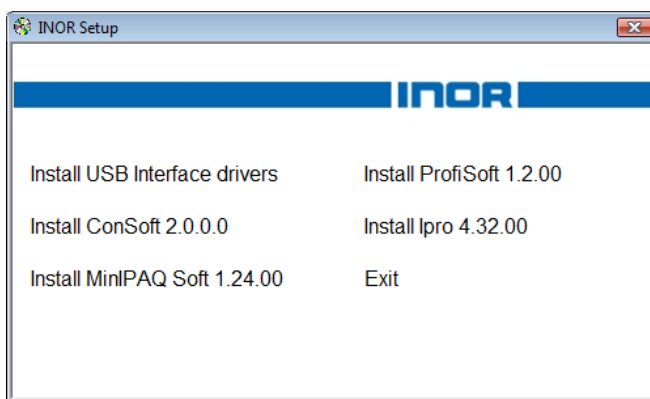
## 6. Installing external configuration softwares

Installing MinIPAQ Soft, ProfiSoft and IPRO

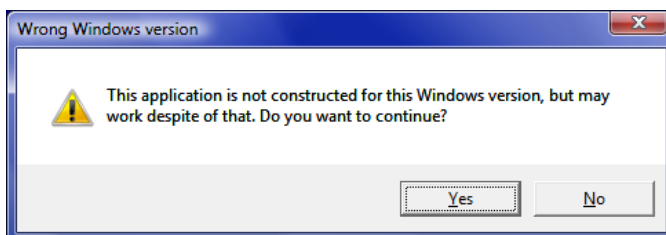
The following softwares **must** be installed for configuring with the USB Interface.

- MinIPAQ Soft 1.24.00 or higher for MinIPAQ transmitters.
- ProfiSoft 1.2.00 or higher for ProfiPAQ transmitters.
- IPRO 4.32.00 or higher for IPAQ transmitters (except IPAQ C/R family).

- 6.1. Click on respective name on INOR Setup Menu and follow the instructions. They must be installed into their default folders during installation.



*When installing MinIPAQ Soft, ProfiSoft and IPRO on a Windows Vista or Windows 7 PC the following error will be displayed, click on [Yes] to continue with the installation.*



Earlier versions of MinIPAQ Soft, ProfiSoft and IPRO will not be overwritten during installation if they already are installed, and can be used for RS232 serial communication with IPRO-X or IPRO off-line cable.

- 6.2. To end the INOR Setup Menu, click Exit.



## 7. Troubleshooting

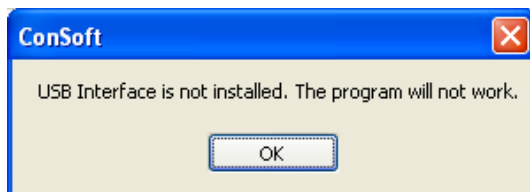
- 7.1. If the INOR Setup Menu does *not* start and displays a menu of actions to perform when inserting the USB memory stick to a USB port (as 1.1.).

⇒ Open **My Computer**. A removable disk with an INOR icon next to it should appear there.

Open the removable disk and run the file INSTALL.EXE as shown below. The **INOR Setup Menu** will start.

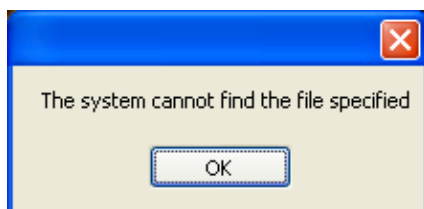


- 7.2. Error “USB Interface is not installed. The program will not work” displays when starting ConSoft.



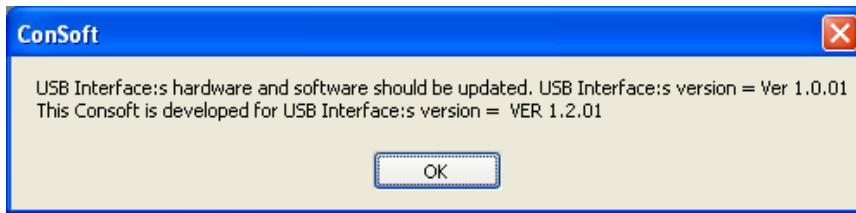
⇒ Install drivers for the USB Interface.

- 7.3. Error “The system cannot find the file specified” displays when trying to configure a transmitter from ConSoft.



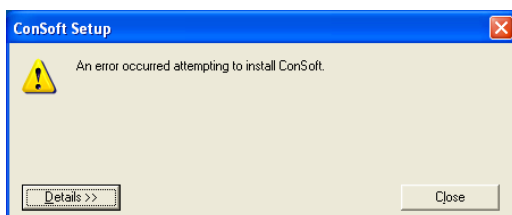
⇒ Install external configuring software (see chapter 6).

- 7.4. Error message saying the USB Interface:s hardware and/or software should be updated appears in ConSoft.



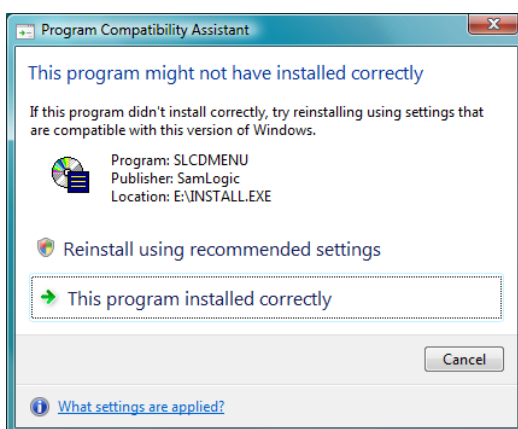
⇒ Contact INOR for update your USB Interface.

- 7.5. Error “An error occurred attempting to install ConSoft.” displays during installation of ConSoft.



⇒ A newer version of ConSoft is already installed on the computer. If you still want to install the older version, uninstall ConSoft through Control Panel – Add or Remove Programs

- 7.6. Depending on Windows security settings you may see the “This program might not have installed correctly” message when exit from the Inor Setup Menu in Windows Vista or Windows 7.



⇒ You can safely ignore this and close the window by choosing the option “This program installed correctly”





# INOR

[www.inor.com](http://www.inor.com), [www.inor.se](http://www.inor.se)

<p>Inor Process AB PO Box 9125 SE-200 39 MALMÖ Sweden Phone: +46-(0)40-31 25 60 Fax: +46-(0)40-31 25 70 E-mail: <a href="mailto:support@inor.se">support@inor.se</a></p>	<p>Inor Transmitter Oy Unikkotie 13 FI-01300 VANTAA Finland Phone: +358-(0)10-4217900 Fax: +358-(0)10-4217901 E-mail: <a href="mailto:jari.stadig@inor.fi">jari.stadig@inor.fi</a></p>	<p>Inor Transmitter GmbH Am Bocksborn 5 63571 Gelnhausen Germany Phone: +49-(0)6051-14807 Fax: +49-(0)6051-14806 E-mail: <a href="mailto:support.de@inor.se">support.de@inor.se</a></p>
--	--	---