

# HITEMP140

## AUTOCLAVE TEMPERATURE

### DATA LOGGER

**TipTemp.com**

#### Features

- ±0.1°C (0.18°F) Accuracy
- Operates Up To 140°C (284°F)
- Submersible (IP68)
- N.I.S.T. traceable
- User Replaceable Battery
- Rugged
- Programmable start time
- Programmable stop time
- Engraved Label
- Probe Lengths Up To 7"
- Battery Life Indicator

#### Benefits

- Simple Setup and Installation
- Minimal Long-Term Maintenance
- Long-Term Field Deployment

#### Applications

- Autoclave Verification
- Implement HACCP Programs
- Food Preparation and Processing
- Environmental Studies
- Well Monitoring
- Dishwasher Testing
- Pasteurization

The HiTemp140 is a rugged, high precision, temperature data logger that is built for use in harsh environments. This stainless steel device is submersible and can withstand temperatures up to 140°C (284°F). With the HiTemp140's standard calibration an accuracy of +/-0.1°C (0.18°F) can be achieved over a wide temperature range, from -40°C to +140°C (-40°F to +284°F).

The HiTemp140 can store up to 32,700 readings, and features a rigid external probe capable of measuring extended temperatures, up to 260°C (500°F). Custom probe lengths are available up to 7". The device records date and time stamped readings, and has non-volatile solid state memory that will retain data even if the battery becomes discharged.

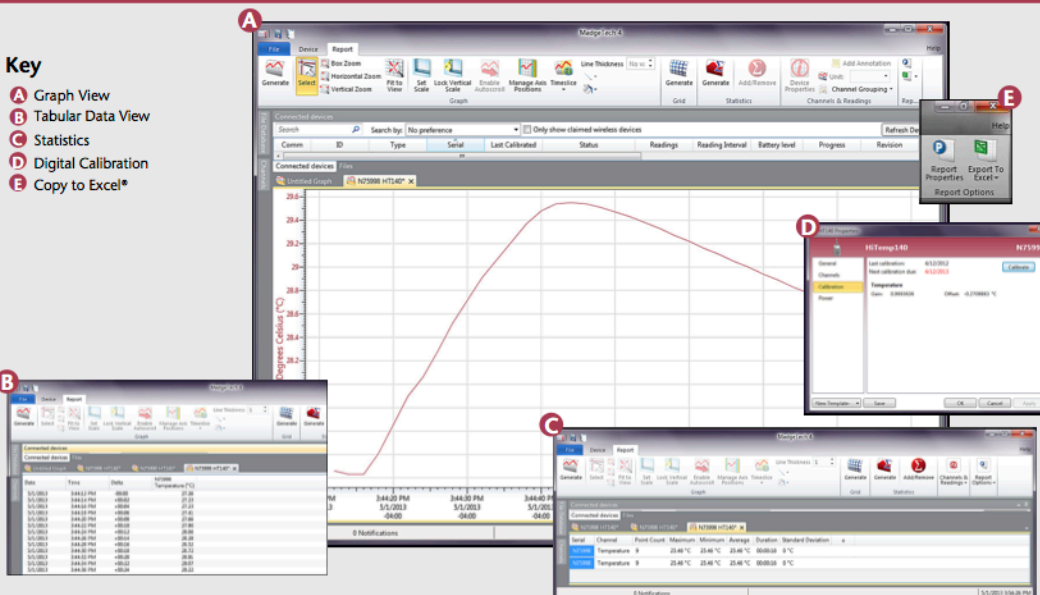
Using the MadgeTech Software, starting, stopping and downloading the HiTemp140 is simple and easy. Graphical, tabular and summary data is provided for analysis and data can be viewed in °C, °F, K or °R. The data can also be automatically exported to Excel® for further calculations.



## MADGETECH DATA LOGGER SOFTWARE

#### Key

- A** Graph View
- B** Tabular Data View
- C** Statistics
- D** Digital Calibration
- E** Copy to Excel®



#### Software Features:

- Multiple graph overlay
- Statistics
- Digital calibration
- Zoom in/ zoom out
- Lethality equations (F<sub>0</sub>, PU)
- Mean Kinetic Temperature
- Full time zone support
- Data annotation
- Min./Max./Average lines
- Data table view
- Automatic report generation
- Summary view
- Multilingual

340 W. Broad St. Burlington, NJ 08016 USA  
Phone: (609) 239-1900

# HITEMP140 SPECIFICATIONS\*

**Temperature Sensor:** 100Ω Platinum RTD

**Probe Measurement Range:** -200°C to +260°C (-328°F to +500°F)

**Temperature Resolution:** 0.01°C (0.02°F)

**Calibrated Accuracy:** ±0.1°C/±0.18°F  
(20°C to +140°C/68°F to +284°F)

±0.3°C/±0.54°F  
(-20°C to +19.99°C/-4°F to +67.98°F)

±0.4°C/±0.72°F  
(-40°C to -20.01°C/-40°F to -4.02°F)

**Start Modes:**

- Software programmable immediate start
- Delay start up to eighteen months in advance

**Stop Modes:**

- Manual through software
- Timed (specific date and time)

**Real Time Recording:** May be used with PC to monitor and record data in real time

**Password Protection:** An optional password may be programmed into the device to restrict access to configuration options. Data may be read out without the password.

**Memory:** 32,700 readings

**Wrap Around:** Yes

**Reading Rate:** One second up to once every 24 hours

**Battery Type:** 3.6V high-temperature lithium battery included; **user replaceable**

**Battery Life:** 1 year typical  
(1 minute reading rate at 25°C/77°F)

**Calibration:** Digital calibration through software

**Calibration Date:** Automatically recorded within device

**Data Format:** Date and time stamped °C, °F, K, °R

**Time Accuracy:** ±1 minute/month at 20°C to 30°C (68°F to 86°F) (Stand alone mode)

**Computer Interface:** IFC400 USB docking station required; 125,000 baud

**Software:** XP SP3/Vista/Windows 7/Windows 8

**Operating Environment:** -40°C to +140°C (-40°F to +284°F), 0%RH to 100%RH

**Dimensions (Body 1.6" x 0.970" dia. (40mm x 24.6mm dia.) HiTemp140-1):**

**Dimensions (Body 1.9" x 0.970" dia. (48mm x 24.6mm dia.) HiTemp140-2, 5.25, 7)**

## Model Number Dimensions (Probe)

HITEMP140-1: 1.1" x 0.125" dia. (0.188" transitional dia.)  
27mm x 3.2mm dia. (4.8mm transitional dia.)

HITEMP140-2: 2.0" x 0.188" dia. (51mm x 4.8mm)  
HITEMP140-2-TD: 2.0" x 0.125" dia. (0.188" transitional dia.)  
51mm x 3.2mm dia. (4.8mm transitional dia.)

HITEMP140-5.25: 5.25" x 0.188" dia. (133mm x 4.8mm dia.)  
HITEMP140-5.25-TD: 5.25" x 0.125" dia. (0.188" transitional dia.)  
133mm x 3.2mm dia. (4.8mm transitional dia.)

HITEMP140-7: 7.0" x 0.188" dia. (178mm x 4.8mm dia.)

**Weight:** 4.2 oz (120g)

**Material:** 316 Stainless Steel

**Approvals:** CE

**BATTERY WARNING:** WARNING: FIRE, EXPLOSION, AND SEVERE BURN HAZARD. DO NOT SHORT CIRCUIT, CHARGE, FORCE OVER DISCHARGE, CRUSH, PENETRATE, OR INCINERATE. BATTERY MAY LEAK OR EXPLODE IF HEATED ABOVE 150°C (302°F).

\*SPECIFICATIONS ARE SUBJECT TO CHANGE WITHOUT NOTICE. SPECIFIC WARRANTY REMEDY LIMITATIONS APPLY. CALL 1-603-456-2011 OR GO TO WWW.MADGETECH.COM FOR DETAILS.

## ORDERING INFORMATION

MODEL	DESCRIPTION	PRICE (U.S.)
HITEMP140-1	High Temperature Data Logger with a 1" probe	\$499.00
HITEMP140-2/ HITEMP140-2-TD	High Temperature Data Logger with a 2" probe/ 2" transitional diameter probe	\$499.00
HITEMP140-5.25/ HITEMP140-5.25-TD	High Temperature Data Logger with a 5.25" probe/ 5.25" transitional diameter probe	\$499.00
HITEMP140-7	High Temperature Data Logger with a 7" probe	\$499.00
IFC400	Docking station with USB cable, software and manual	\$120.00
ER1425S-HT	Replacement battery for the HiTemp140	\$50.00
*NIST	NIST Calibration Certificate	\$60.00

ASK ABOUT  
OUR OTHER  
DATA  
LOGGERS

Temperature  
Humidity  
Pressure  
pH  
Level  
Shock  
LCD Display  
Pulse/Event/State  
Current  
Voltage  
Wireless  
Intrinsically Safe  
Spectral Vibration  
Motion

\*To order the product with the NIST certificate add -CERT to the end of the part number and add \$60.00 to the price.

TIP TEMPerature Products

340 W. Broad St. Burlington, NJ 08016 USA  
Phone: (609) 239-1900

DOC-1211009-00 REV 13 2013.05.01