

HITEMP140-PT AUTOCLAVE TEMPERATURE DATA LOGGER WITH 24" FLEXIBLE PROBE

TipTemp.com

Features

- ±0.1°C (0.18°F) Accuracy
- 24" Flexible Probe
- Operates Up To 140°C (284°F)
- Submersible (IP68)
- NIST traceable
- User Replaceable Battery
- Rugged
- Programmable start time
- Programmable stop time
- Engraved Label
- Battery Life Indicator

Benefits

- Simple Setup and Installation
- Minimal Long-Term Maintenance
- Long-Term Field Deployment

Applications

- Autoclave Verification
- Implement HACCP Programs
- Food Preparation and Processing
- Environmental Studies
- Well Monitoring
- Dishwasher Testing
- Pasteurization

The HiTemp140-PT is a submersible, temperature data logger that can operate up to 140°C (284°F) and has an accuracy of +/-0.1°C (0.18°F). The device features a 24" flexible stainless steel probe for measuring extended temperatures up to 260°C (500°F). The probe is durable and can be spiraled, bent or angled in any direction, making it easy to log temperatures within bottles, vials or other hard to reach places.

The HiTemp140-PT records date and time stamped readings, and has non-volatile solid state memory that will retain data even if the battery becomes discharged.

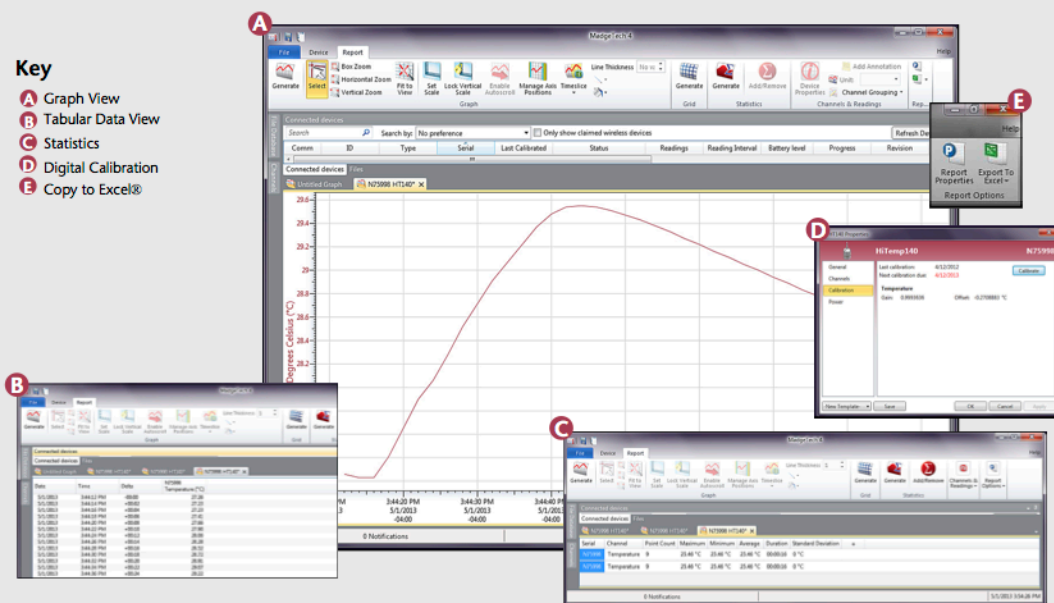
Using the MadgeTech Software, starting, stopping and downloading the HiTemp140-PT is simple and easy. Graphical, tabular and summary data is provided for analysis and data can be viewed in °C, °F, K or °R. The data can also be automatically exported to Excel® for further calculations.



MADGETECH DATA LOGGER SOFTWARE

Key

- A** Graph View
- B** Tabular Data View
- C** Statistics
- D** Digital Calibration
- E** Copy to Excel®



Software Features:

- Multiple graph overlay
- Statistics
- Digital calibration
- Zoom in/ zoom out
- Lethality equations (F₀, PU)
- Mean Kinetic Temperature
- Full time zone support
- Data annotation
- Min./Max./Average lines
- Data table view
- Automatic report generation
- Summary view
- Multilingual

340 W. Broad St. Burlington, NJ 08016 USA
Phone (609) 239-1900

HITEMP140-PT SPECIFICATIONS*

Temperature Sensor: 100Ω Platinum RTD

Probe Measurement Range: -200°C to +260°C (-328°F to +500°F)

Temperature Resolution: 0.01°C (0.02°F)

Calibrated Accuracy: ±0.1°C/±0.18°F
(20°C to +140°C/68°F to +284°F)

±0.3°C/±0.54°F
(-20°C to +19.99°C/-4°F to +67.98°F)

±0.4°C/±0.72°F
(-40°C to -20.01°C/-40°F to -4.02°F)

Start Modes:

- Software programmable immediate start
- Delay start up to eighteen months in advance

Stop Modes:

- Manual through software
- Timed (specific date and time)

Real Time Recording: May be used with PC to monitor and record data in real time

Password Protection: An optional password may be programmed into the device to restrict access to configuration options. Data may be read out without the password.

Memory: 32,700 readings

Wrap Around: Yes

Reading Rate: One second up to once every 24 hours

Battery Type: 3.6V high-temperature lithium battery included; **user replaceable**

Battery Life: 1 year typical
(1 minute reading rate at 25°C/77°F)

Calibration: Digital calibration through software

Calibration Date: Automatically recorded within device

Data Format: Date and time stamped °C, °F, K, °R

Time Accuracy: ±1 minute/month at 20°C to 30°C (68°F to 86°F) (Stand alone mode)

Computer Interface: IFC400 USB docking station required; 125,000 baud

Software: XP SP3/Vista/Windows 7/Windows 8

Operating Environment: -40°C to +140°C (-40°F to +284°F), 0%RH to 100%RH

Dimensions (Body): 1.9" x 0.97" dia. (48mm x 24.6mm dia.)

Dimensions (PT-1 Probe): Probe tip: 1.7" x 0.125" dia. (42mm x 3.2mm dia.)
Flexible portion: 22" x 0.062" dia. (559 mm x 1.6mm dia.)

Dimensions (PT-5 Probe): Probe tip: 4.8" x 0.125" dia. with 1" x 0.188 dia. handle (121mm x 3.2mm dia. with 25mm x 4.8mm dia. handle)
Flexible portion: 22" x 0.062" dia. (559 mm x 1.6mm dia.)

Weight: 4.2 oz (120g)

Material: 316 Stainless Steel

Approvals: CE

BATTERY WARNING: WARNING: FIRE, EXPLOSION, AND SEVERE BURN HAZARD. DO NOT SHORT CIRCUIT, CHARGE, FORCE OVER DISCHARGE, CRUSH, PENETRATE, OR INCINERATE. BATTERY MAY LEAK OR EXPLODE IF HEATED ABOVE 150°C (302°F).

*SPECIFICATIONS ARE SUBJECT TO CHANGE WITHOUT NOTICE. SPECIFIC WARRANTY REMEDY LIMITATIONS APPLY. CALL 1-603-456-2011 OR GO TO WWW.MADGETECH.COM FOR DETAILS.

ORDERING INFORMATION

MODEL	DESCRIPTION	PRICE (U.S.)
HITEMP140-PT-1	Extended Range Temperature Data Logger with a 24" Flexible Probe	\$499.00
HITEMP140-PT-5	Extended Range Temperature Data Logger with a 24" Flexible Probe and 5" probe tip	\$499.00
IFC400	Docking station with USB cable, software and manual	\$120.00
ER1425S-HT	Replacement battery for the HiTemp140-PT	\$50.00
*NIST	NIST Calibration Certificate	\$60.00

**ASK ABOUT
OUR OTHER
DATA
LOGGERS**

Temperature
Humidity
Pressure
pH
Level
Shock
LCD Display
Pulse/Event/State
Current
Voltage
Wireless
Intrinsically Safe
Spectral Vibration
Motion

*To order the product with the NIST certificate add -CERT to the end of the part number and add \$60.00 to the price.