

# HITEMP150FP

## EXTENDED RANGE TEMPERATURE DATA LOGGER WITH FLEXIBLE PROBE

**TipTemp.com**

### Features

- Extended temperature range
- Flexible probe
- Teflon enclosed cable
- Rugged
- Reusable
- Programmable start time
- Real-operation
- N.I.S.T. traceable
- Easy-to-use software
- Low cost

### Benefits

- Simple Setup and Installation
- Minimal Long-Term Maintenance
- Long-Term Field Deployment

### Applications

- Medical/Pharmaceutical
- HACCP Compliance
- Food preparation and processing
- Extreme temperature monitoring
- Conveyor Ovens

The HiTemp150FP is a small, rugged, reusable temperature data logger specifically designed for deployment in harsh environments. The HiTemp150FP comes standard with a 24" flexible teflon enclosed cable, 4" penetration style stainless steel probe, and 316 stainless steel body (other cable and probe lengths available through special order). With a measurement range of -40°C to +260°C, the HiTemp150FP is perfect for use in medical and pharmaceutical labs, food preparation and processing plants, and other applications involving extreme temperatures.

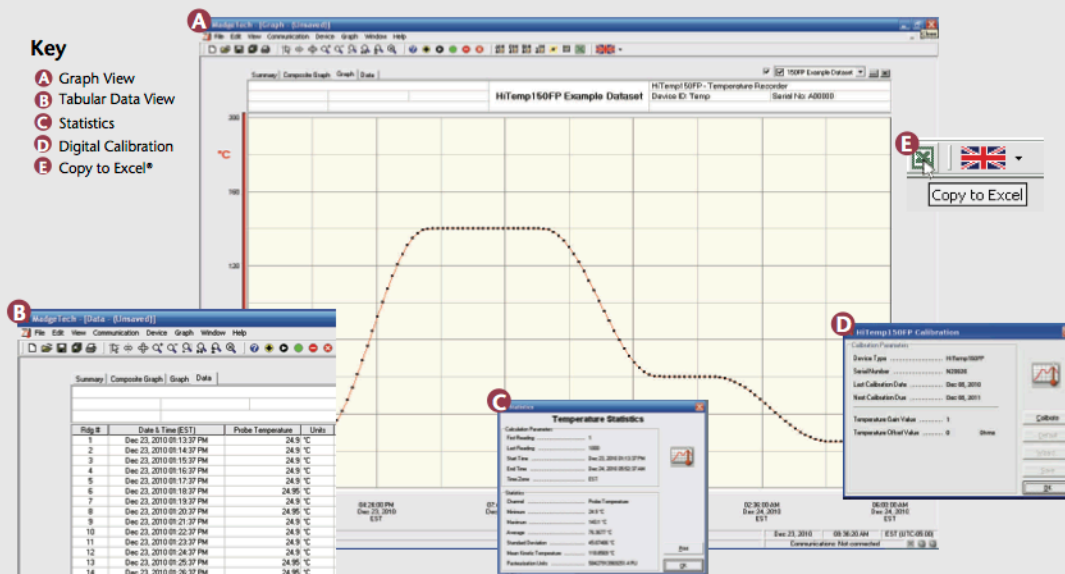
The HiTemp150FP features an RTD temperature sensor, which allows for extremely fast response times and highly accurate readings. Reading rates are configurable from once every second to once every twelve hours. With a reading capacity of 32,767 data points, the HiTemp150FP is perfect for use in even the longest of processes. Its real time clock ensures that all data is time and date stamped, making it easy to track and analyze temperature changes. The logger can be set for an immediate start or for activation at a future date and time, allowing for simultaneous data recording via the deployment of multiple loggers. Its non-volatile solid state memory keeps written data intact, even if the battery becomes discharged.

One of the most powerful features of the HiTemp150FP is the accompanying software. MadgeTech's easy-to-use Windows® based program features a variety of powerful tools, all of which work together to allow for the effortless creation and exportation of professionally formatted spreadsheets and customized graphs. Complex analyses, such as Mean Kinetic Temperature, Sterilization Units, and Pasteurization Units, can be performed with just one click of the mouse.

In addition to data analysis, MadgeTech's software is used for the digital calibration of the HiTemp150FP. Thanks to the software's easy calibration wizard, this task can be quickly performed by even the most novice of computer users. For those requiring an additional guarantee of accuracy, N.I.S.T. calibration certificates are available.



## MADGETECH DATA LOGGER SOFTWARE



- Software Features:**
- Multiple graph overlay
  - Statistics
  - Digital calibration
  - Zoom in/ zoom out
  - Lethality equations (F<sub>0</sub>, PU)
  - Mean Kinetic Temperature
  - Full time zone support
  - Data annotation
  - Min./Max./Average lines
  - Data table view
  - Automatic report generation
  - Summary view
  - Multilingual

340 W. Broad St. Burlington, NJ 08016 USA  
Phone: (609) 239-1900

# HITEMP150FP SPECIFICATIONS\*

<b>Temperature Sensor:</b>	100Ω Platinum RTD
<b>Probe Measurement Range:</b>	-40 to +260°C
<b>Temperature Resolution:</b>	0.05°C
<b>Calibrated Accuracy:</b>	±0.5°C (Over 100°C span)
<b>Start Modes:</b>	Software programmable immediate start or delay start up to six months in advance
<b>Real Time Recording:</b>	May be used with PC to monitor and record data in real time
<b>Memory:</b>	32,767 readings
<b>Reading Rate:</b>	One second up to once every 12 hours
<b>Lethality Equations:</b>	Sterilization unit and Pasteurization units are available in the software with a click of a button
<b>Calibration:</b>	Digital calibration through software
<b>Calibration Date:</b>	Automatically recorded within device
<b>Battery Type:</b>	3.6V high-temperature lithium battery included
<b>Battery Life*:</b>	1 year typical (1 min. reading rate @ 25°C)

\*The device must be sent back to MadgeTech for battery replacement.

<b>Data Format:</b>	Date and time stamped °C, °F, K, °R
<b>Time Accuracy:</b>	±1 minute/month at 20°C (RS232 cable not in use)
<b>Computer Interface:</b>	PC serial or USB (interface cable required); 2,400 baud
<b>Software:</b>	XP SP3/Vista/Windows 7
<b>Operating Environment:</b>	-40 to +150°C, 0 to 95% RH non-condensing
<b>Dimensions (Body):</b>	1.1" x 1.75" dia. (28mm x 45mm dia.)
<b>Dimensions (Cable*):</b>	2.0' x .14" dia. (610 mm x 4mm dia.)
<b>Dimensions (Probe Handle):</b>	1 1/2" x 3/8" dia. (39mm x 10 mm dia.)
<b>Dimensions (Probe):</b>	4" x 1/8" dia. (102mm x 4mm dia.) <i>(Other Probe lengths available upon request)</i>
<b>Material (Body &amp; Probe):</b>	316 Stainless Steel
<b>Material (Cable):</b>	Teflon cable
<b>Weight:</b>	9 oz (255 g)
<b>Approvals:</b>	CE

**BATTERY WARNING:** FIRE, EXPLOSION, AND SEVERE BURN HAZARD. DO NOT SHORT CIRCUIT, CHARGE, FORCE OVERDISCHARGE, DISASSEMBLE, CRUSH, PENETRATE OR INCINERATE. BATTERY MAY LEAK OR EXPLODE IF HEATED ABOVE 150° C (302° F).

\*SPECIFICATIONS ARE SUBJECT TO CHANGE WITHOUT NOTICE. SPECIFIC WARRANTY REMEDY LIMITATIONS APPLY. CALL 1-603-458-2011 OR GO TO WWW.MADGETECH.COM FOR DETAILS.

## ORDERING INFORMATION

MODEL	DESCRIPTION	PRICE (U.S.)
HITEMP150FP	Extended Range Temperature Recorder with Flexible Probe	\$499.00
IFC110	Software, manual and RS232 interface cable	\$99.00
IFC200	Software, manual and USB interface cable	\$119.00
*NIST	N.I.S.T. Calibration Certificate	\$60.00
SVP –Secure	Protocols for validating the 21 CFR Part 11 ready, secure data logging system	\$600.00
SVP-Secure License	License for MadgeTech SVP-Secure Software (unlimited users, license per computer)	\$1000.00

**ASK ABOUT OUR OTHER DATA LOGGERS**

- Temperature
- Humidity
- Pressure
- pH
- Level
- Shock
- LCD Display
- Pulse/Event/State
- Current
- Voltage
- Wireless
- Intrinsically Safe
- Spectral Vibration
- Motion

\*To order the product with the N.I.S.T. certificate add -CERT to the end of the part number and add \$60.00 to the price.