

### iMini Plus Dry Ice

The iMini Plus Dry Ice Logger is capable of measuring and recording extreme temperatures from -100°C to 40°C. It is the ideal solution for ensuring safe transport and storage of perishables held in dry ice.

#### Features

- Temperature range of -100°C to 40°C (-148°F to 104°F)
- 1 meter Teflon cable connects stainless steel temperature probe to the data logger
- Start & stop button features located on the face of the unit
- Bookmarking capabilities
- Large LCD Display with multifunctional viewing
- Large memory capacity; 8048 readings
- Available as a single trip or multi-use unit



#### Ideal Uses

- Pharmaceuticals
- Medical Samples
- Biologicals
- Diagnostic Specimens
- Organs
- Human/Animal Tissue
- Clinical Trials
- Serums
- Enzymes
- Food & Beverage



Certifications:

**2  
Year  
Warranty**

**bsi.**

**21 CFR  
Part 11**

**CE**

**EN12830  
Compliant**

**NIST  
Traceable**

## Specifications

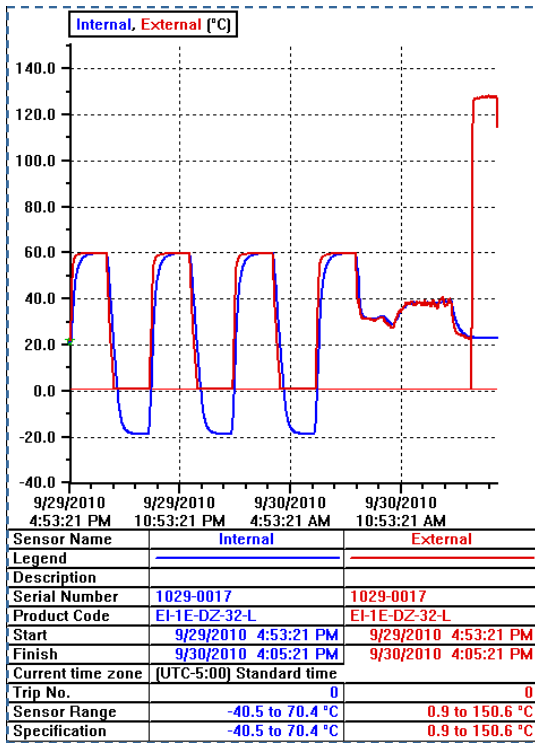
Description	Specifications
Product Code	MP-OE-N-8-L (multi-use), MP-ST-N-8-L (single trip)
Memory Options	8048 Readings
Program Interval	5 seconds-18 hours
Time Accuracy	+/- 1 minute per month
Sensors	External
Temperature Range	-100°C to 40°C (-148° to 104°F)
Temperature Accuracy	From -100°C to -80°C +/-1.0°C (-148°F to -112°F +/- 1.8°F) From -79°C to -10°C +/- 0.7°C (-111°F to 14°F +/- 1.3°F) From -9°C to 40°C +/- 0.6°C (15°F to 104°F +/- 1.0°F)
Resolution	0.1°C (0.1°F)
Sensor Response Time	T90 of 5 minutes
LCD Operating Range	-20°C to 70°C (-4°F to 158°F)
Alarm Thresholds	Two
Alarm Configuration	High & low
Bookmark	Yes
Preprogram Option	User programmable; preprogramming available
Start Option	Push button and/or timer
Auto Restart	No
Start Delay	Yes
Stop Option	Yes (button can be disabled)
Size	83x57x17mm (excluding lug & external sensor)
Weight	70 grams (including battery)
Case Material	Polycarbonate/ABS
Battery	User replaceable lithium battery; 3v coin cell
IP Rating	IP 64 (with DB9 cap on)
Warranty	2 year excluding battery (multit-use) 1 trip excluding battery (single trip)
Calibration	NIST traceable upon request
Accuracy Certificate	Yes
Other Certification	ISO 9001:2008, CE, RoHS, EN 12830
Battery Life	1-2 years (depending on usage)
Interface	USB to serial
Software	Console Pro
Default File Format	.LCF
Data Export	TXT, CSV, SYLK & LCF
Security	Password protected (programmable using Console Pro Software)

## Console Pro

### Features:

- Program and configure logger
- Download & view data analysis
- View current readings
- Export data in CSV & TXT format
- Re-arm function

### Graph



### Readings & Summary

Index	Elapsed Time	Date	Time	Freezer (°C)
Serial Number				1301-0011
H/w version				2.2x
Trip No.				1
Description				
Battery				92.5 %
Original time zone				(UTC+8:00) Standard time
Current time zone				(UTC-5:00) Standard time
Start		6/17/2013	5:00:00 AM	
Finish		6/17/2013	9:35:00 PM	
Sampling				5 Minutes
Readings				200 [995 Minutes]
Active				-40.5 to 70.4 °C
Specification				-35.0 to -15.0 °C
Average				-20.5
Highest				24.7
Lowest				-24.9
PHI Aerobic				0.74
PHI Anaerobic				0.52
MKT				-1.01
Total No. of Pulses				-342.94
Growing Degree Day				0.0
Out Of Specification				80 Minutes
				10 Minutes from -14.9 to -10.0
				5 Minutes from -9.9 to -5.0
				5 Minutes from -4.9 to 0.0
				450 Seconds from 0.1 to 5.0
				5 Minutes from 5.1 to 10.0
				5 Minutes from 10.1 to 15.0
				5 Minutes from 15.1 to 20.0
				2250 Seconds from 20.1 to 25.0
1	00:00:00	6/17/2013	5:00:00 AM	1.8
2	00:05:00	6/17/2013	5:05:00 AM	-1.5
3	00:10:00	6/17/2013	5:10:00 AM	-7.7
4	00:15:00	6/17/2013	5:15:00 AM	-11.6
5	00:20:00	6/17/2013	5:20:00 AM	-14.7
6	00:25:00	6/17/2013	5:25:00 AM	-16.9
7	00:30:00	6/17/2013	5:30:00 AM	-18.5

### Views

### Links

### Analysis

## Cold Chain Packaging Solutions

As a global industry leader in the design and manufacturing of temperature controlled packaging, Cryopak is committed to quality, cost-effective thermal packaging solutions

- Insulated Shippers
- Pre Qualified Shippers
- Insulated Pallet Shippers
- Phase Change Material
- Refrigerants



## Testing and Design Center



- Thermal Testing
- Integrity & Distribution Testing
- Accelerated Aging
- Thermal Mapping
- Packaging Design

Cryopak Test Center (CTC) provides technical expertise to customers looking to ensure quality through responsible packaging improvements. CTC's staff of certified packaging engineers can provide independent data reports or act as package design consultants.

## Verification and Monitoring

Cryopak Verification Technologies (CVT) is committed to the development and manufacturing of the most technologically advanced, reliable and user-friendly temperature monitors in the world. Spanning most industries, budgetary needs and applications, CVT has the right solution.

- Real Time Monitoring
- Data Loggers
- Digital Indicators
- Calibration Services

